

COMMUNITY SCHOOL OF PERFORMING ARTS

# Course Catalogue

2024–25 Academic Year





# About Us



The Colburn Community School of Performing Arts (CSPA) serves students of all ages with classes in music, drama and early childhood arts education, taught by acclaimed faculty committed to providing the highest quality teaching on a modern campus designed solely for excellence in performance and education.

Founded in 1950 as an open-enrollment school, the CSPA covers a broad range of styles, age levels and degrees of difficulty. Music classes include applied musical instruction, music theory, chamber ensemble and orchestral opportunities. Dance classes through the Trudi Zipper Dance Institute offer a wide range in disciplines from ballet, tap, modern, creative, jazz and musical theatre dance. In addition to their individual studies, Colburn students participate in a variety of community outreach programs and perform in more than 300 concerts and recitals each year, many of which are free and open to the public.

The Colburn Community School of Performing Arts has been accredited by the National Association of Schools of Music (NASM) since 1980 and is also a member of the National Guild for Community Arts Education.

## Our Staff

Susan Cook, Dean

Timothy Lewis, Program Manager

Dan Gonda, Operations Specialist

Arnulfo Reyes, Marketing and Program Specialist

Ron Mitchell, Ensemble Coordinator and Student Services Specialist

Josiah Vietti, Ensemble and Student Services Coordinator

Kenia Agaton, Student Services Coordinator

## Contact Us

Email [cspa@colburnschool.edu](mailto:cspa@colburnschool.edu)

Phone [213-621-4548](tel:213-621-4548)

Fall & Spring Hours  
Mon–Fri, 10 am–6 pm  
Sat, 8 am–4 pm  
Sun, Closed

Summer Hours  
Mon–Sat, 8 am–4 pm  
Sun, Closed



# Access to Excellence

## Adaptive Music Program/Lessons for Individuals with Special Needs

The Community School provides a special program for adults and children with academic or learning challenges. The Adaptive Music Program (AMP) provides individualized music programming and adapted music instruction by qualified specialist Ms. [Francesca Bori](#).

Students with special needs have the opportunity to learn to play a musical instrument within a therapeutic environment designed to develop one's own potential. This process begins with a structured music-based assessment of motor skills, behavioral, social and emotional levels, attention, and communication ability. Monthly meetings with parents and yearly written summaries provide an opportunity to review the progress of the student.

For more information, please contact Ms. Bori at [fbori@colburnschool.edu](mailto:fbori@colburnschool.edu).



## Scholarships

The Colburn Community School of Performing Arts welcomes students of varying levels of experience and instruction. We recognize that some students may require financial support to cover the cost of their studies. Thanks to the generosity of individuals and foundations both locally and nationally, the Community School offers robust scholarships for students who are enrolled in private lessons, ensembles, and group classes.

Scholarships are offered during the fall and spring semesters; we do not offer scholarships for the summer session. Scholarships are only available for students ages 7 months to 18 years, or grade 12 and under.

We are currently accepting applications for need-based scholarships on a rolling basis. Apply online at [colburnschool.edu/scholarships](https://colburnschool.edu/scholarships).



# Private Music Instruction

Individual lesson schedules are arranged between the instructor and the student. All new students must first submit an online Inquiry Form through our website. The information will be transferred to the appropriate department chair who will then contact the student to schedule an informal interview/audition within 7 business days of receipt. Upon completion of the interview, the department chair will determine which instructor, if any, the student can be placed with. Please go to [www.colburnschool.edu/inquiry](http://www.colburnschool.edu/inquiry) to submit your inquiry.

2024–25 Private Instruction will run from August 24–May 12; all meetings must be arranged with the instructor. Dedicated make-up weeks will take place from January 4–12 and May 20–June 2. **Note:** 2025 Summer Private Instruction will take place from June 4–August 1. All students may register for any number of lessons as agreed upon with the instructor. Lesson package discounts will be available.

Private lesson enrollment will remain open throughout the academic year. School-aged students are required to register for the full academic year, or 32 lessons. Students who register late in the year must register for the number of weeks that remain in the academic year. Adult students may register for any number of lessons as agreed upon by themselves and their instructor.

## Faculty

### *Bassoon BSPI*

Beene, Richard\*  
Kuhlmann, Evan

### *Cello VCPI*

Bori, Francesca  
Cho, Stella  
Gasparyan, Vardan  
Greensmith, Clive\*  
Kessler, Carlyn  
Kiefer, Martha  
Koo, Sarah  
Lash, Ben  
Naill, Richard  
Wright, Elizabeth  
Yamagata, Nancy

### *Clarinet CLPI*

Gilad, Yehuda  
Wellwood, William  
Yoshimi, Michael

### *Conducting COND*

Nunez, Eleanor

### *Dalcroze DLPI*

Izumi, Mari

### *Double Bass DBPI*

Baird, Ryan  
Botsford, Ted  
Young, David

### *Flute FLPI*

Glicklich, Martin  
Lundgren, Karen  
Tanner, Chelsea

### *Guitar GTPI*

Sheu, Connie  
Young, Erin  
Youngstrom, Kenton

### *Harp HPPI*

Turovsky, JoAnn\*

### *Horn HNPI*

Ondarza, Danielle  
Upton, Elizabeth

### *Jazz Piano JPPI*

Kinnon, Liz

### *Jazz Saxophone JSPI*

Secard, Lee

### *Music Theory MTPI*

Sawada, Kathy

### *Music Composition CPPI*

Eremiasova, Michaela  
Nelson, Jordan

### *Oboe OBPI*

Sugata, Ted

### *Percussion PCPI*

Kalaf, Jerry  
McGrath, Kenneth  
Ordaz, Matt

### *Piano PNPI*

Bori, Francesca  
Cheli, Dominic  
de Jong-Pombo, Teresa  
Dokshitsky, Rina  
Fadial, Vanessa  
Gilmour, John  
Glicklich, Carmina  
Grubelic Malo, Ivana  
Huang, Grace  
Hudson, Natalia  
Izumi, Mari  
Kapouler-Gartner, Inga  
Kim, Hyejin  
Kim, Miji

### *Piano (cont.)*

Kwon, Heewon  
Lavner, Jeffrey  
Leone, Rodolfo  
Martínez-Antón, Régulo  
Rhee, Yung Mee  
Wu, Hui  
Yui, Micah

### *Saxophone SXPI*

Hallberg, John  
Pittel, Harvey\*  
Secard, Lee

### *Trombone TBPI*

Suminski, Shelly

### *Trumpet TPPI*

Zonshine, Mike

### *Tuba TUPI*

Tornquist, Douglas

### *Viola VAPI*

Cha, Keum Hwa  
Coletti, Gina  
Granger, Alex  
Picken, Andrew  
Shimasaki, Rumi  
Shimizu, Margaret

### *Violin VNPI*

Batjer, Margaret\*  
Cha, Keum Hwa  
Cadow, Sherry  
Fischer, Sam  
Granger, Alex  
Gronnier, Henry  
Kastner, Gallia  
Kennedy, Carrie  
Kim, Sofia  
Kim, So Jin  
Kreston, Aimée

### *Violin (cont.)*

Kwuon, Joan  
Lee, Joanna  
Lipsett, Robert\*  
Lavner, ShihLan  
Manoulian, Varty\*  
Olevsky, Dimitry  
Schwabe, Richard  
Simeonov, Moni  
Shimasaki, Rumi  
Shimizu, Margaret  
Yun, Chan Ho

### *Voice VOPI*

Dunn, Adrian  
Johnson, Craig  
Oliver, Jessie  
Stevens, Michael

## 2024-25 Tuition Fees For 32 Weeks

30 min	\$2,752
45 min	\$3,936
60 min	\$5,024
90 min	\$7,360

## Promotional Discounts for 2024-25

The school is also providing a promotional discount on **woodwind, brass, and percussion** private lessons. The rates for 32 lessons are listed below.

30 min	\$2,416
45 min	\$3,232
60 min	\$4,160

## Music Theory

All private lesson students receive a 50% discount on all music theory classes with yearlong enrollment.

**Note:** This discount cannot be applied to pro-rated music theory tuition.



## Early Childhood Creative Arts



### Sing, Move, and Play

Embark on your child's journey in the performing arts! We offer a sequential curriculum designed to support the cognitive, creative, and social development of children ages 7 months to 7 years.



### Get to Know the Department Chair, Dr. Nita Baxani

Dr. Baxani has held leadership roles in arts programs and schools in both the United States and Germany. She received a Doctor of Education degree from Teachers College, Columbia University, where her dissertation focused on the musicality of infants within a childcare community. Her work in creating new programs and curriculum design is collaborative in nature and covers a variety of pedagogical approaches that foster an inclusive child-centered environment. As an arts advocate, Dr. Baxani enjoys creating programs and cultivating partnerships with schools and community and cultural organizations.

### Benefits for Children and Parents

Classes employ developmentally appropriate materials to encourage growth in key areas such as:

- Social and emotional development
- Cognition
- Motor skills



Caregivers are a child's first teachers, so your involvement in our classes is crucial to your child's progression through the curriculum. By attending classes with your child, you will continue to strengthen the connection with your child while laying a foundation for their continued artistic growth at Colburn.

One of our goals is to support students as they work towards independence. As your child progresses through the curriculum, the level of your involvement in class may change. rships with schools and community and cultural organizations.



## Discover Our Sequential Curriculum

Course Name/ ID	Description	Ages	Fee
Babes in Colburnland ECGA101	Our specially-trained instructors work with parents and infants to cultivate developmental listening skills with activities to help children absorb music concepts. Teachers design sensory experiences to fascinate and captivate children. As classes progress, infants move from being merely receptive to engaging in an active role.	7–17 mo	\$580
Making Music in Colburnland ECMC101	This family-oriented class encourages toddlers to become actively engaged in making music. Through the use of nursery poems and songs, children explore various musical traditions and styles.	18–24 mo	\$580
Musical Play ECMP201	As toddlers gain more motor development skills, they're more likely to want to move, and this class encourages them to explore movement through music and imagination. Teachers also work with the young students to improve listening skills through play, songs, stories, and games.	2–3 yr	\$580
Creative Storymaking and Movement ECST101	Students are treated to games and stories that will trigger their imagination, individual expression, and language skills. They engage in exercises to develop body awareness, concentration, group cooperation, coordination, and balance. Activities utilize rhythmic verbalization, pantomime, dramatic play, and creative movement.	3–5 yr	\$615
Super Singers ECSS101	Super Singers begin working on vocal techniques through games, songs, and stories. Our knowledgeable teachers help students produce good tone quality and improve diction as well as correct vocal placement and singing in the proper register. They also introduce basic elements of music, such as tempo, dynamics, rhythm, phrasing, timbre, and style.	3.5–5 yr	\$615
Rhythm and Movement ECRM101 <i>Pre Req. Super Singers or with Chair approval</i>	Rhythm helps give movement purpose. In this class, preschool-age children learn to direct their energy into basic rhythms and rhythmic patterns while also improving listening and motor skills. They're also shown proper playing techniques for small percussion instruments used in classroom exercises.	3.5–5 yr	\$615
Rhythmic Styles and Techniques ECRS102 <i>Pre Req. Super Singers &amp; Rhythm and Movement or with Chair approval</i>	Classes are designed to initiate instrument instruction with a concentration on various rhythmic styles and techniques on Orff and percussion instruments. Teachers work with students to improve muscle and hand-eye coordination as well as a growing awareness of rhythmic and melodic patterns. Students even begin rhythmic notation reading. Creativity is promoted through improvisation activities.	4–5.5 yr	\$615
Exploring the Keys ECEK101	The class provides musical experiences in the development of motor and ear-training skills, hand-eye coordination, a sense of keyboard geography, finger dexterity, and concentration. This course offers pre-reading exercises to develop the child's keyboard sense. Students must have access to an acoustic piano or keyboard for daily practice.	4–5 yr	\$565
Sing, Move, and Play! ESSM100	This course provides a foundation of music skills structured through critical listening, singing, creative movement, and playing a variety of unpitched and pitched instruments. Students will develop musician-ship skills that prepare them to explore a variety of music while building music concepts such as rhythm, melody, dynamics, and form.	4–6 yr	\$615
Singing More ECGA101	Through interactive games, songs, and stories, students develop singing skills, explore vocal techniques, and learn basic elements of music. An extension of Super Singers, this class will work towards building a basic foundation for ensemble singing. <i>This class is yearlong.</i>	5–7 yr	\$1,125



New students must submit an inquiry for class placement prior to enrolling.  
[Submit an inquiry online here!](#)





# Conducting & Composition

## Conducting



The Director of Bands and Orchestras, Eleanor Núñez, takes students on a journey through the elements of conducting technique in order to begin to appreciate the relationship between gesture and sound.

To enroll in conducting lessons or classes, students must currently be an instrumentalist or vocalist at an intermediate to advanced level. Classes and lessons are ideal for students who have been enrolled in chamber music, orchestra, or vocal ensemble programs.



Course Name/ ID	Age	Day	Pre-Requisites	Mins	Fee
Introduction to Instrumental Conducting ORCH101	15–25 yr	Su	Students must currently be an instrumentalist or vocalist at an intermediate or advanced level.	55	\$1,160
Instrumental Conducting for Adult- SORCH102	26+ yr	Su	Students must currently be an instrumentalist or vocalist at an intermediate or advanced level.	55	\$1,160

## Composition



Course Name/ ID	Age	Day	Pre-Requisites	Mins	Fee
Composition CPIN201	Varies	Tu	Instructor approval required prior to enrolling. Email Michaela Eremiasova at <a href="mailto:meremiasova@colburnschool.edu">meremiasova@colburnschool.edu</a> .	90	\$1,700
Introduction to Composition CPIN101	Varies	We	Placement test is required prior to enrolling.	90	\$1,700
Introduction to Songwriting MTSW200	Varies	Tu	Instructor approval required prior to enrolling. Email Michaela Eremiasova at <a href="mailto:meremiasova@colburnschool.edu">meremiasova@colburnschool.edu</a> .	90	\$1,700



# Drama & Musical Theatre

## Drama



The Drama program at the Community School focuses on the process of learning so that students can build confidence and are inspired to take creative risks. The acting classes begin with improvisation, body movement, and theater games, and progress to monologue, scene work, script analysis, and character development. The program strongly emphasizes process over product, creating a learning environment in which students are free to explore and work without fear of judgment.



Course Name/ ID	Age	Day	Pre-Requisites	Mins	Fee
Creative Dramatics DRCD101	5–7 yr	Sa	N/A	25	\$1,000
Drama I DRCL101	8–11 yr	Sa	N/A	55	\$1,215
Drama II DRCL201	12–16 yr	Sa	N/A	55	\$1,215

## Musical Theatre



The Community School's Musical Theatre program is designed for students ages 14–18 who have a passion for singing, dancing, and acting. This is a program for the triple threat artist to deepen their skill level in voice, dance, and acting, and to provide the skills needed to seamlessly shift back and forth between the three. Our High School Musical Theatre program meets on Sundays from 1–4:30 pm and helps to prepare serious Musical Theatre artists to be competitive in an ever-growing field and prepares them for college auditions.

Our weekly workshop includes a full dance class that rotates jazz, modern and ballet dance throughout the year. This is followed by a two-hour session that concentrates on group song repertoire, acting, and choreography. Musical Theatre students are instructed on how to connect detailed acting skills to the song and dance. The workshop presents two performances per year.

Course Name/ ID	Age	Day	Pre-Requisites	Mins	Fee
Acting the Song SING201	13–18 yr	Sa	Can be taken á la carte	90	\$3,765
High School Musical Theatre Dance DIMIT105	13–18 yr	Su	Can be taken á la carte	90	\$1,085
High School Musical Theatre Workshop MTWS200	13–18 yr	Su	Audition required for full program	210	\$1,085





# Ensembles



## Meet the Director of Bands and Orchestras, Eleanor Núñez

Eleanor Núñez is a Spanish-American conductor, pianist, and educator currently based in Southern California. She had her international debut in August 2022 with the Orquesta Sinfónica de la Ciudad de Asunción in Asunción, Paraguay, where she conducted Piano Concerto No. 2 in F minor by Frédéric Chopin with soloist Chiara D’Odorico as well as the debut of Symphony No. 1 by the prolific composer Daniel Luzko.

Eleanor programs unique concerts that bridge the gap between the audience and musicians on stage. Her belief that music should be accessible to all shines through her creative repertoire programming, enthusiastic rehearsals, and inviting concert environment. Musically, Eleanor loves exploring “the classics” and pairing them with new, modern works. Her conducting experience spans orchestral, wind ensemble, and choral repertoires since she enjoys working with musical groups of all disciplines and genres.



## Bands

Course Name/ ID	Ages	Day	Pre-Requisites	Mins	Fee
Concert Band ENCB100	11–18 yr	Sa	Audition required. Email Arnulfo Reyes at <a href="mailto:areyes@colburnschool.edu">areyes@colburnschool.edu</a> .	150	\$1,145
Wind Ensemble ENWB200	13–18 yr	Sa	Audition required. Email Arnulfo Reyes at <a href="mailto:areyes@colburnschool.edu">areyes@colburnschool.edu</a> .	150	\$1,145



# Ensembles

The Ed and Mari Edelman Chamber Music Institute offers one of the most comprehensive and intense pre-college level chamber music learning experiences of any music school in North America. Students are coached weekly by members of Colburn's nationally acclaimed faculty.



Ensembles from the Institute have been prizewinners in numerous competitions, including the Fischhoff Competition, Coltman Chamber Music Competition and the Young Artists Peninsula Music Festival, and have received engagements to perform on the nationally syndicated Public Radio International Series From the Top as well as with Chamber Music Society at Lincoln Center.

## Intro to Chamber Music Program



Course Name/ ID	Ages	Day	Pre-Requisites	Mins	Fee
Intro to Chamber Ensemble CHM100	Varies	Varies	Audition required. Email Keren Schweitzer at <a href="mailto:kschweitzer@colburnschool.edu">kschweitzer@colburnschool.edu</a> .	TBD	\$1,145

## Chamber Music Program



Course Name/ ID	Ages	Day	Pre-Requisites	Mins	Fee
Chamber Music Ensemble CHM101	Varies	Varies	Audition required. Email Moni Simeonov at <a href="mailto:ssimeonov@colburnschool.edu">ssimeonov@colburnschool.edu</a> .	TBD	\$1,285

## Honors Program



The Honors program is for serious and dedicated young musicians for whom music is the top priority. Time commitment is for a minimum of three hours of rehearsal and coaching weekly. In addition, there is a required Honors Chamber Music Seminar, held on Saturday afternoons. Honors groups have regular performing opportunities on the Friday Night, School and Honors Recitals and also in the greater community. All groups are encouraged to enter competitions and are expected to make the necessary preparations. Weekends must be kept open and flexible for frequent performances, masterclasses and competitions.



# Ensembles

## Meet the Director of Choral Programs, Adrian Dunn

Adrian Dunn is an accomplished Grammy Award winner, singer, composer, and conductor. Mr. Dunn holds a Bachelor of Music and Master of Music degree in Voice from the Music Conservatory at Roosevelt University with additional musical studies in opera at the Sibelius Academy of Music in Finland.



## Choral Program



Course Name/ ID	Ages	Day	Pre-Requisites	Mins	Fee
Singing More ECSCM200	5–7 yr	Sa	Instructor approval required. Email Nita Baxani at <a href="mailto:nbaxani@colburnschool.edu">nbaxani@colburnschool.edu</a> .	45	\$1,125
Children's Chorus VEPT100	7–10 yr	Sa	Audition required. Email Ron Mitchell at <a href="mailto:rmitchell@colburnschool.edu">rmitchell@colburnschool.edu</a> .	50	\$1,215
Youth Chorus VEYP200	10–14 yr	Sa	Audition required. Email Ron Mitchell at <a href="mailto:rmitchell@colburnschool.edu">rmitchell@colburnschool.edu</a> .	90	\$1,395
Colburn Concert Choir VECC400	14–20 yr	Th/Sa	Audition required. Email Ron Mitchell at <a href="mailto:rmitchell@colburnschool.edu">rmitchell@colburnschool.edu</a> .	Varies	\$2,595
Colburn Concert Choir for Private Voice Students VECC401	14–20 yr	Th/Sa	Students must be enrolled in private voice lessons to qualify for discounted tuition rate.	Varies	\$500
Colburn Community Chorus CSCC100	13+ yr	Varies	Audition required. Email Ron Mitchell at <a href="mailto:rmitchell@colburnschool.edu">rmitchell@colburnschool.edu</a> .	Varies	Free



## The Colburn Concert Choir 2025 Tour

The Colburn Concert Choir is honored to participate in the National Memorial Day Choral Festival, a prestigious event held from May 22 to May 26, 2025. This four-night, five-day tour will provide students with the opportunity to perform in iconic venues, explore historic landmarks, and partake in enriching cultural experiences. [Learn more.](#)





# Ensembles



The Community School's jazz program, known as the Colburn Jazz Workshop, is dedicated to encouraging students to explore the art of improvisation and ultimately even develop into composers, as well. Students can develop their skills through jazz music lessons, playing in an ensemble, or enrolling in a theory class.



## Jazz Workshops



Course Name/ ID	Ages	Day	Pre-Requisites	Mins	Fee
Adult Jazz Workshop JZAC100	Adults	Su	Instructor approval required. Email Liz Kinnon at <a href="mailto:lkinnon@colburnschool.edu">lkinnon@colburnschool.edu</a> .	135	\$535
Colburn Jazz Workshop Big Band JZBB400	Middle school and up	Tu	Instructor approval required. Email Lee Secard at <a href="mailto:lsecard@colburnschool.edu">lsecard@colburnschool.edu</a> .	155	\$1,225
Monday Night Band JZMN400	Middle school and up	Mo	Instructor approval required. Email Lee Secard at <a href="mailto:lsecard@colburnschool.edu">lsecard@colburnschool.edu</a> .	155	\$1,225
Saturday 11 AM Band JZSA102	Middle school and up	Sa	Instructor approval required. Email Lee Secard at <a href="mailto:lsecard@colburnschool.edu">lsecard@colburnschool.edu</a> .	155	\$1,225
Sunday 11 AM Band JZSN100	Middle school and up	Su	Instructor approval required. Email Lee Secard at <a href="mailto:lsecard@colburnschool.edu">lsecard@colburnschool.edu</a> .	155	\$1,225
Sunday 12 PM Band JZSN401	Middle school and up	Su	Instructor approval required. Email Lee Secard at <a href="mailto:lsecard@colburnschool.edu">lsecard@colburnschool.edu</a> .	120	\$1,225
Sunday 2 PM Band JZSN300	Middle school and up	Su	Instructor approval required. Email Lee Secard at <a href="mailto:lsecard@colburnschool.edu">lsecard@colburnschool.edu</a> .	155	\$1,225
Thursday Night Band JZTN400	Middle school and up	Th	Instructor approval required. Email Lee Secard at <a href="mailto:lsecard@colburnschool.edu">lsecard@colburnschool.edu</a> .	155	\$1,225



# Ensembles



## String Ensemble & Orchestra

Course Name/ ID	Ages	Day	Pre-Requisites	Mins	Fee
String Ensemble ENSE200	Minimum 5th grade	We	Audition required. Email Rebecca Frazier at <a href="mailto:rfrazier@colburnschool.edu">rfrazier@colburnschool.edu</a> .	50	\$1,095
String Orchestra ENSO300	Minimum 6th grade	We	Audition required. Email Rebecca Frazier at <a href="mailto:rfrazier@colburnschool.edu">rfrazier@colburnschool.edu</a> .	90	\$1,095

## Advanced Orchestras

The Community School of Performing Arts offers two different advanced orchestras for students between the ages of 13 and 18. Members of each ensemble are selected through competitive auditions each year. Both orchestras perform several concerts throughout the year in venues such as Zipper Hall and St. James Cathedral.



Course Name/ ID	Ages	Day	Pre-Requisites	Mins	Fee
Colburn Youth Orchestra ENYO300	13–18 yr	Su	Audition required. Email Josiah Vietti at <a href="mailto:jvietti@colburnschool.edu">jvietti@colburnschool.edu</a> .	165	\$1,725
Colburn Sinfonietta ENCS400	13–18 yr	Su	Audition required. Email Josiah Vietti at <a href="mailto:jvietti@colburnschool.edu">jvietti@colburnschool.edu</a> .	165	\$1,725



# Ensembles

## Small Ensemble



The Community School of Performing Arts offers a variety of ensembles that give students of all skill levels the opportunity to collaborate with their peers in smaller arrangements.



Course Name/ ID	Ages	Day	Pre-Requisites	Mins	Fee
Cello Choir ENCC101	Minimum 4th grade	We	Audition required. Email Carlyn Kessler at <a href="mailto:ckessler@colburnschool.edu">ckessler@colburnschool.edu</a> .	50	\$1,095
Colburn Fiddles on Fire! CFF300	6–12 yr	Sa	Audition required. Email Aimée Kreston at <a href="mailto:akreston@colburnschool.edu">akreston@colburnschool.edu</a> .	60	<i>* Fee waive if accepted by instructor</i>
Double Bass Ensemble DBEN101	Varies	Su	Instructor approval required. Email Ryan Baird at <a href="mailto:rbaird@colburnschool.edu">rbaird@colburnschool.edu</a> .	90	\$1,150
Guitar Ensemble GTEN101	9+ yr	Sa	Instructor approval required. Email Kenton Youngstrom at <a href="mailto:kyoungstrom@colburnschool.edu">kyoungstrom@colburnschool.edu</a> .	55	\$1,235
Guitar Orchestra SGGO101	10–16 yr	Tu	Instructor approval required. Email Connie Sheu at <a href="mailto:csheu@colburnschool.edu">csheu@colburnschool.edu</a> .	45	\$1,115
Intermediate Guitar Quartet SZGQ401	Varies	Sa	Instructor approval required. Email Erin Young at <a href="mailto:eyoung@colburnschool.edu">eyoung@colburnschool.edu</a> .	45	\$1,235
Violin Ensemble ENVE100	Minimum 3rd grade	We	Audition required. Submit an inquiry online.	40	\$1,000





# Group Classes

## Group Guitar

The Community School also offers group classes for ages five through adult. These classes offer students with a range of experience levels a safe and supportive environment to learn guitar technique and musicianship.



Course Name/ ID	Ages	Day	Pre-Requisites	Mins	Fee
Group Guitar: Beginning I GTGC101	6–14 yr	Sa	N/A	55	\$1,235
Group Guitar: Beginning II GTGC102	Varies	Sa	N/A	55	\$1,235
Group Guitar: Intermediate GTGC201	Varies	Sa	N/A	55	\$1,235
Group Guitar Advanced GTGC301	Varies	Sa	N/A	55	\$1,235
Guitar Ensemble GTEN101	9+ yr	Sa	Instructor approval required. Email Kenton Youngstrom at <a href="mailto:kyoungstrom@colburnschool.edu">kyoungstrom@colburnschool.edu</a> .	55	\$1,235

## Suzuki Guitar

The Suzuki method, founded by Japanese violinist Dr. Shinichi Suzuki (1898–1998), rests on the philosophy that every child is born with musical ability that can be nurtured and developed to a high level. The method requires parental participation in every lesson and in-home daily practice, and a major commitment of time. Classical guitar is an incredibly accessible instrument to children of all ages that can be played both solo and in a group class setting. The guitar is an effective bridge into both classical and popular styles of music and experience some of the fundamentals of guitar technique taught through the Suzuki method. New students are welcome to inquire for the 2024–25 academic year.

Suzuki Guitar Group A SZGT100	4–8 yr	Mo	Instructor approval required. Email Connie Sheu at <a href="mailto:csheu@colburnschool.edu">csheu@colburnschool.edu</a> .	45	\$670
Suzuki Guitar Group B SZGT101	6–9 yr	Mo	Instructor approval required. Email Connie Sheu at <a href="mailto:csheu@colburnschool.edu">csheu@colburnschool.edu</a> .	45	\$670
Suzuki Guitar Group C: Sight Reading and Musicianship SZGT300	7–10 yr	Mo	Instructor approval required. Email Connie Sheu at <a href="mailto:csheu@colburnschool.edu">csheu@colburnschool.edu</a> .	45	\$670



# Group Classes

## Group Piano



Group piano classes are ideal for the absolute beginner with no prior experience. Students must own an electric keyboard or piano at home. Registration is open to both continuing and new students. It is recommended that students only take group piano for one to two years of study, after which the student should inquire to be placed with a private instructor.



Course Name/ ID	Ages	Day	Pre-Requisites	Mins	Fee
Introduction to the Piano PNGL100	5–6 yr	Sa	N/A	45	\$1,235.00
Group Piano: Beginning I PNGL101	6–10 yr	Sa	N/A	45	\$1,235.00
Group Piano: Beginning II PNGL102	6–10 yr	Sa	N/A	45	\$1,235.00
Group Piano: Intermediate I PNGL201	7–12 yr	Sa	N/A	45	\$1,235.00
Group Piano: Intermediate II PNGL301	7–12 yr	Sa	N/A	45	\$1,235.00
Introduction to Piano for Future Music Majors PNGL401	15+ yr	Sa	N/A	55	\$1,235.00

## Honors Piano Seminar

October 26 | February 8 | March 8 | April 26 | May 24

The Honors Piano Seminar is a unique combination of lectures and master classes designed to help students develop an individual style and personality in performances. The seminar will feature presentations and master classes with world renowned pedagogues. Participating students must be age 13 and up.



# Group Classes

## Beginning Strings

Students who are new to learning string instruments can take one of our group classes for young beginners.



Course Name/ ID	Ages	Day	Pre-Requisites	Mins	Fee
Beginning Group Viola VAIN100	7–10yr	Sa	N/A	50	\$1,235
Cello Choir ENCC101	Minimum 4th grade	We	Audition required. Email Carlyn Kessler at <a href="mailto:ckessler@colburnschool.edu">ckessler@colburnschool.edu</a> .	50	\$1,095
Intermediate Group Viola VAIN200	Varies	Sa	N/A	50	\$1,235



## Suzuki Strings

The Suzuki method, founded by Japanese violinist Dr. Shinichi Suzuki, rests on the philosophy that every child is born with musical ability that can be nurtured and developed to a high level. This teaching method involves parent participation both in lessons and daily practices at home, and requires a major commitment of time.

Course Name/ ID	Ages	Day	Pre-Requisites	Mins	Fee
Suzuki Group - Cello SZGC101	4+	We	Submit an inquiry for placement prior to enrolling.	TBD	\$670.00
Suzuki Group - Violin SZGN101	4+	We	Submit an inquiry for placement prior to enrolling.	TBD	\$670.00





# Group Classes

## Wind, Brass, and Percussion



The Woodwinds, Brass, and Percussion Department offers flute, oboe, clarinet, bassoon, saxophone, horn, trumpet, trombone, tuba, and percussion lessons. Whether you are already proficient in your instrument, or a beginner, you can find excellent training at the Colburn School individualized to your needs.

Course Name/ ID	Ages	Day	Pre-Requisites	Mins	Fee
Group Low Brass Beginners JSLB23-24	Varies	TBD	N/A	TBD	\$1,235
Group Percussion JSGP23-24	Varies	Th	N/A	45	\$927
Intermediate Flute Ensemble IFE100	Varies	TBD	N/A	60	\$512.50
Advanced Flute Ensemble AFE200	Varies	TBD	N/A	60	\$768.75

## Voice



At the Colburn School, we teach young vocalists to master their instrument through private voice lessons, vocal classes, and choirs. Our experienced faculty helps students realize physical awareness, performance, and audition etiquette while advancing and improving vocal techniques.



Course Name/ ID	Ages	Day	Pre-Requisites	Mins	Fee
Acting the Song SING201	14–20	Sa	N/A	90	\$1,225
Diction to Singers	TBF	N/A	N/A	TBD	\$0.00
Vocal Consultation VOIC101	0–Up	N/A	N/A	TBD	\$285.00



# Music Theory

Music theory at the Community School of Performing Arts is a singing-based curriculum designed to enhance and support instrumental and vocal study through active engagement and kinesthetic exploration. From pre-reading exposure classes to 20th century atonality, music theory classes deepen understanding of the musical process and strengthen artistic expression and performance.

Music theory and Dalcroze classes are designed to be taken simultaneously or one at a time to accommodate each individual's pace and progress. In the same way, upper level music theory classes are compatible with simultaneous compositional study as well as advanced Dalcroze Rhythmic Solfege study.



## Music Theory



Course Name/ ID	Ages	Day	Pre-Requisites	Mins	Fee
Elementary Music Theory IA MTEL201	Varies	Varies	Submit an inquiry for placement prior to enrolling.	55	\$1,300
Elementary Music Theory IB MTAL203	Varies	Varies	Submit an inquiry for placement prior to enrolling.	55	\$1,300
Elementary Music Theory IC MTAL204	Varies	Varies	Submit an inquiry for placement prior to enrolling.	55	\$1,300
Elementary Music Theory II MTAL205	Varies	Varies	Submit an inquiry for placement prior to enrolling.	55	\$1,300
Music Theory: Intermediate Theory I MTIM302	Varies	Varies	Submit an inquiry for placement prior to enrolling.	55	\$1,300
Music Theory: Intermediate II MTIM304	Varies	Varies	Submit an inquiry for placement prior to enrolling.	55	\$1,300
Music Theory: Advanced I MTAV501	Varies	Varies	Submit an inquiry for placement prior to enrolling.	55	\$1,300
Music Theory: Advanced II MTAV502	Varies	Varies	Submit an inquiry for placement prior to enrolling.	55	\$1,300
Music Theory: Advanced III MTAV504	Varies	Varies	Submit an inquiry for placement prior to enrolling.	55	\$1,300
Music Theory Advanced IV MTAV506	Varies	Varies	Submit an inquiry for placement prior to enrolling.	55	\$1,300



# Dalcroze

## Dalcroze



The Dalcroze philosophy relies on solfege, eurhythmics, and improvisation which lay the foundation for students serious about instrumental and vocal study. Class activities include vocal awareness, ear training, and sight-singing as well as rhythmic movement. Improvisational works unlock students' innate musicality and develop musical security while a kinetic approach builds up “muscle memory”, a trait key to the spontaneous musician. Students' own discovery in music brings joyful and powerful musicianship.

Course Name/ ID	Ages	Day	Pre-Requisites	Mins	Fee
Introduction to Dalcroze	Varies	Sa	Submit an inquiry for class placement prior to enrolling.	50	\$1,185
Dalcroze I (Eurhythmics) DALC101	Varies	Varies	Submit an inquiry for class placement prior to enrolling.	50	\$1,185
Dalcroze for Suzuki DALC201	Varies	We	Submit an inquiry for class placement prior to enrolling.	TBD	\$580
Dalcroze II (Rhythmic Solfege) DALC201	Varies	Sa	Submit an inquiry for class placement prior to enrolling.	50	\$1,185
Dalcroze III (Rhythmic Solfege) DALC301	Varies	Sa	Submit an inquiry for class placement prior to enrolling.	55	\$1,300
Dalcroze IV (Rhythmic Solfege) DALC401	Varies	Sa	Submit an inquiry for class placement prior to enrolling.	55	\$1,300
Dalcroze for Suzuki DALC201	Varies	TBD	Submit an inquiry for placement prior to enrolling.	TBD	\$580
Eurhythmics for Teacher Training DIME102	Adults	Su	This class is designed for music educators.	90	\$300
Introduction Dalcroze Eurhythmics for Music Teachers DALC-MT1	Adults	TBD	This class is designed for music educators.	TBD	\$220
Solfege and Improvisation for Teacher Training DIME101	Adults	Su	This class is designed for music educators.	90	\$300



## Suzuki

## Suzuki



The Suzuki method, founded by Japanese violinist Dr. Shinichi Suzuki (1898–1998), rests on the philosophy that every child is born with musical ability that can be nurtured and developed to a high level. The method requires parental participation in every lesson and in-home daily practice, and a major commitment of time. Classical guitar is an incredibly accessible instrument to children of all ages that can be played both solo and in a group class setting. The guitar is an effective bridge into both classical and popular styles of music and experience some of the fundamentals of guitar technique taught through the Suzuki method. New students are welcome to inquire for the 2024–25 academic year.

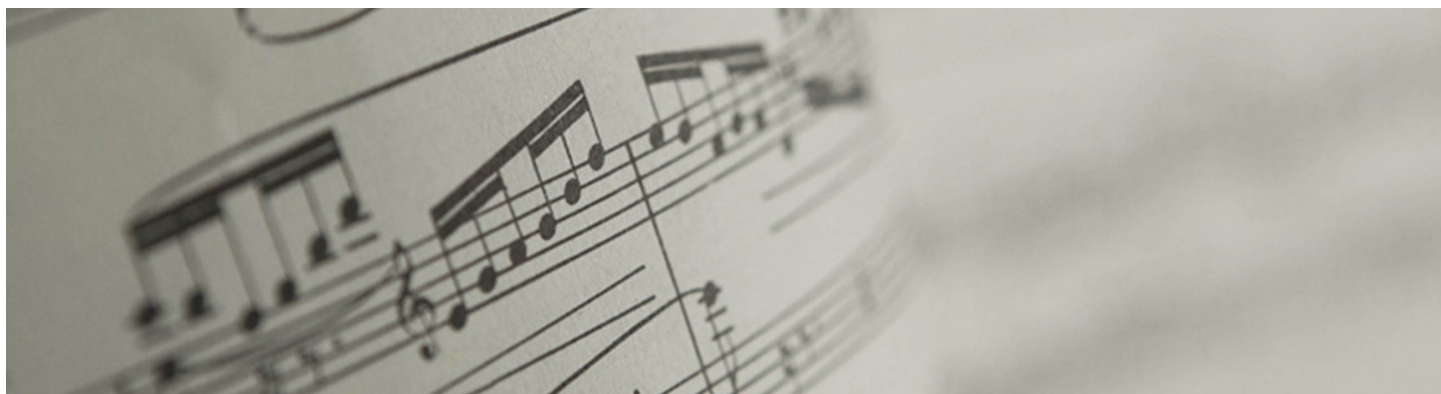


Course Name/ ID	Ages	Day	Pre-Requisites	Mins	Fee
Cello Choir ENCC101	Minimum 4th grade	We	Audition required. Email Carlyn Kessler at <a href="mailto:ckessler@colburnschool.edu">ckessler@colburnschool.edu</a> .	50	\$1,095
Dalcroze for Suzuki DALC201	Varies	TBD	Submit an inquiry for placement prior to enrolling.	TBD	\$580
Guitar Ensemble GTEN101	9+	Sa	Instructor approval required. Email Kenton Youngstrom at <a href="mailto:kyoungstrom@colburnschool.edu">kyoungstrom@colburnschool.edu</a> .	55	\$1,235
Intermediate Guitar Quartet SZGQ401	Varies	Sa	Instructor approval required. Email Erin Young at <a href="mailto:eyoung@colburnschool.edu">eyoung@colburnschool.edu</a> .	45	\$1,235
Suzuki Group - Cello SZGC101	4+	We	Submit an inquiry for placement prior to enrolling.	TBD	\$670
Suzuki Guitar Group A SZGT100	4–8yr	Mo	Instructor approval required. Email Connie Sheu at <a href="mailto:csheu@colburnschool.edu">csheu@colburnschool.edu</a> .	45	\$670
Suzuki Guitar Group B SZGT101	6–9yr	Mo	Instructor approval required. Email Connie Sheu at <a href="mailto:csheu@colburnschool.edu">csheu@colburnschool.edu</a> .	45	\$670
Suzuki Guitar Group C: Sight Reading and Musicianship SZGT300	7–10yr	Mo	Instructor approval required. Email Connie Sheu at <a href="mailto:csheu@colburnschool.edu">csheu@colburnschool.edu</a> .	45	\$670
Suzuki Group - Violin SZGN101	4+	We	Submit an inquiry for placement prior to enrolling.	TBD	\$670.00
Violin Ensemble ENVE100	Minimum 3rd grade	We	Audition required. Submit an inquiry online.	40	\$1,000





# Adult Classes



At the Colburn Community School of Performing Arts, we offer a wide range of learning and performance opportunities for students ages 18 and up. Whether you're looking to join an adult ensemble, take private lessons, or learn about music fundamentals so that you can support your child's music education, our program is the place for you!

## Adult Ensembles & Group Classes



Course Name/ ID	Ages	Day	Pre-Requisites	Mins	Fee
Adult Flute Choir FLCH200	Adults	Mo	Instructor approval required. Email Karen Lundgren at <a href="mailto:klundgren@colburnschool.edu">klundgren@colburnschool.edu</a> .	60	\$300
Adult Jazz Workshop JZAC100	Adults	Su	Instructor approval required. Email Liz Kinnon at <a href="mailto:lkinnon@colburnschool.edu">lkinnon@colburnschool.edu</a> .	135	\$535
Adult Beginning Guitar GTAG 101	Adults	Tu	N/A	55	\$545
Adult Group Piano – Beg I PNAG101	Adults	Mo	N/A	TK	\$545
Adult Intermediate Guitar GTAG201	Adults	Tu	N/A	55	
Eurhythmics for Teacher Training DIME102	Adults	Sun	This course is designed for music educators.	90	\$300
Introductory Dalcroze Eurhythmics for Music Educators DALC-MT-1	Adults	Varies	This course is designed for music educators.	55	\$220
Solfège and Improvisation for Teacher Training DIME101	Adults	Su	Submit an inquiry for placement prior to enrolling.	90	\$300



# Academic Policies

At the Community School of Performing Arts, we strive for open communication between faculty, students, and administration and ask that you familiarize yourself with the information below regarding our school policies. The complete policies can be found on our website at [www.colburnschool.edu/community-school/student-resources/](http://www.colburnschool.edu/community-school/student-resources/).

## Registration Policies & Procedures

The registration procedures at The Colburn School are designed to place students in appropriate courses through interviews, auditions, and other screening methods. These procedures help to minimize enrollment in inappropriate courses, and to minimize the need to drop lessons and classes. Registration for group classes and ensembles must be completed during the enrollment period listed on the Academic Calendar. Late enrollments will be permitted pending the instructor's approval. Students may register for private instruction at any time throughout the year.

A \$30 registration fee will be applied to all new enrollments beginning August 1, 2024 for fall and year-long enrollments or January 13, 2025 for spring enrollments.

All students are required to commit to a full year of study for approximately 32 weeks during the fall and spring semester. There are only three exceptions to this rule:

1. Students in the Early Childhood and Adult programs are only required to commit to one semester.
2. Adults enrolling in private lessons may commit to a mutually-agreeable schedule with their private instructor that is less than 32 weeks.
3. School-aged students enrolling in private lessons after the start of the academic year may register for the number of weeks remaining in the year.

All other exceptions must be approved by the Dean. Students must submit a written request for an exception to the Dean by emailing the Community School office at [cspa@colburnschool.edu](mailto:cspa@colburnschool.edu).

## Tuition Pro-Rate Schedule

Students beginning group classes after the start of a semester will be charged tuition on a pro-rated basis, as follows:

### Single Semester Classes

- Weeks 1-4: Student pays 100% of tuition
- Weeks 5-8: Student pays 75% of tuition
- Weeks 9-12: Student pays 50% of tuition
- Weeks 13-16: Student pays 25% of tuition

### Full-Year Classes (Fall & Spring)

- Weeks 1-8: Student pays 100% of tuition
- Weeks 9-16: Student pays 75% of tuition
- Weeks 17-24: Student pays 50% of tuition
- Weeks 25-32: Student pays 25% of tuition

Tuition is not pro-rated for Summer Session classes.

## Jury Requirement

All school-aged students enrolled in private lessons are required to perform a jury during the week of May 13-19, 2025. No lessons or classes will take place during this time. The jury is an important learning experience for our students, and it provides them not only with an opportunity to perform, but also to receive written feedback from other CSPA faculty. The jury schedule is coordinated by the Program Manager with the assistance of the Department Chairs. The fee for juries is included in the private lesson tuition and is non-refundable. The Colburn School greatly values this as an important learning experience.

## Drop/Withdraw Procedure

The parent/student must complete and submit the Add/Drop Form either in-person to the Community School office, or via email to [cspa@colburnschool.edu](mailto:cspa@colburnschool.edu). Once receipt is confirmed by the Community School office, the drop request will be reviewed by the Dean. All refunds and credits must be approved by the Dean. There is no guarantee that a full refund and/or credit will be granted.

The student is eligible for a 100% refund of tuition if the form was submitted prior to the first day of the semester\*. Following the start of the semester, students may be eligible for the following:

- During the first week of class: refund up to 75%
- During the second week of class: refund up to 50%
- During the third week of class: refund up to 25%
- Following the third week of class, there are NO REFUNDS

\*NOTE: The first day of the semester for year-long enrollments corresponds to the beginning of the fall semester. The first day of the semester for single-semester classes (Early Childhood and Adult Classes) corresponds to the start date of the respective semester. Drop requests for year-long enrollments following the third week of the fall semester will only be honored pending the Dean's approval.

Informing an instructor of a decision to withdraw, stopping payment, or not attending class does not constitute a withdrawal. Exceptional requests for refunds due to a family or medical emergency may be made in writing to the Dean within 14 days of the missed class and must include appropriate documentation. There is no guarantee that a full refund will be approved due to a family or medical emergency.



# Academic Policies

## (Cont.)

### Absence Policies

Students must notify faculty of anticipated absences as a courtesy to the faculty members; however, this does not exempt the student from payment as contracted. There will be no make-up lessons for student absences. If a teacher is absent from a scheduled lesson, a make-up lesson shall be scheduled at a mutually convenient time. If the student misses a make-up lesson, there will be no second make-up opportunity. In cases of sudden illness on the part of the teacher, the teacher and The School shall make every reasonable attempt to notify students.

### Suspension

Delinquency in payment of tuition and fees may result in suspension of a student's enrollment. Suspended students shall not be allowed to attend classes, rehearsals, or lessons; instruction shall be resumed only upon full payment of any balance due and with approval of the Program Manager. There will be no credit or make-up for any lessons or classes missed because of suspension.

### Payments

Payment must accompany the registration form. Payment of tuition and fees is expected in full at the time of enrollment unless a deferred payment plan is requested. Upon approval of a deferred payment plan, all payments are due on or before the 15th of the month. All deferred payment plan arrangements must be made directly with the Community School office, and all payments will be handled by the Cashier.

Any payments received after the 15th will be automatically assessed a \$35 late fee. Subsequent late fees will be charged every month until payment is received.

Deferred payment plans will remain in effect until tuition is paid in full. Withdrawing from a class does not guarantee cancellation of remaining payments. Cancellation of remaining payments is subject to the Dean's approval.

### Key Card Access/ID Badges

To enhance campus security, each family will be given up to three ID badges to access the building and parking facilities at Colburn. All students must fill out a Card Key Request Form, which can be picked up from the Community School office and submit it to the security desk in the Grand or Olive Building. Proof of registration and payment is required at the time of submission. Key cards will be required to enter buildings, access elevators, and use the library. Please pay attention to posted signs and requests made by security guards to show your key card. Lost key cards may be replaced for a fee of \$25. Please visit the Community School office to pay the replacement fee.

### Parking

With a student population of 2,000+ students, parking at the Colburn School is not guaranteed. A limited number of spaces are available to Colburn families on a first come first served basis. Families can receive up to two parking decals upon completing registration. However, a parking decal does not constitute a guaranteed parking space.

On a busy day when there is a line of cars waiting to enter the garage, students may be dropped off in front of the school on Grand Avenue. There is a loading area in front of the doors across from the Broad Museum. After dropping off your student, please make your way to Lower Grand and patiently wait in line for a parking space to open in the garage. If you do not wish to wait for a spot to open, offsite parking at a discounted rate is available at Lot #3 on the southwest corner of Olive and 2nd Street. We recommend that you have a validation in-hand when parking in Lot #3 so that you can receive the discounted rate without interruption. Validations can be purchased in the Community School office for \$4 each.

### Emergency Alert System

The Colburn School notifies its community of emergency situations through text messages using an alert system called InformaCast. In the event of an emergency, such as a fire, active shooter, or earthquake, messages will inform the community of the nature of the emergency, what to do, and when the situation is clear. Parents and students are strongly encouraged to register with InformaCast. Text "#emergencynotification" to (818) 423-4168 to receive Colburn School emergency alerts from InformaCast. Contact Sandra Gendron, Security Director, at [sgendron@colburnschool.edu](mailto:sgendron@colburnschool.edu) with any questions about InformaCast.

For complete school policies, please visit: <https://www.colburnschool.edu/community-school/student-resources/>



# SCHOLARSHIPS AT THE COMMUNITY SCHOOL OF PERFORMING ARTS

If you have a passion and commitment to music, there's a place for you at Colburn's Community School of Performing Arts. Because of the commitment and generosity of individuals and foundations locally and nationally, the Community School offers robust scholarships for private lessons, ensembles, group classes, and Early Childhood. Find the scholarship that's right for you.

Herbert Zipper and Amplify Applications due April 15, 2024  
Need-Based Applications due May 1, 2024



"Colburn and my Herbert Zipper Scholarship fills my quiet life with music that brings out the best in me because I get to experience the best of this world."

EMILY HSIAO,  
HERBERT ZIPPER SCHOLAR RECIPIENT

## 2022–23 Community School of Performing Arts Scholarship Overview

- Over \$1.25m provided in scholarship support
- 43% of students received tuition relief
- 109 zip codes represented
- Need based scholarships are granted to families with an income of less than \$98,000


### Start Your Application Today



Application materials and additional information:  
[colburnschool.edu/community-school/scholarships/](https://colburnschool.edu/community-school/scholarships/)

The scholarship application can be completed online. Physical applications should be submitted to the Community School office in-person on weekdays from 10 am–6 pm and Saturdays from 9 am–3 pm, by email, or by mail:

[cspa@colburnschool.edu](mailto:cspa@colburnschool.edu)

COLBURN  
  
SCHOOL



Community School of Performing Arts  
C/O Colburn School  
200 South Grand Avenue  
Los Angeles, California 90012  
[colburnschool.edu](https://colburnschool.edu)



## Need-Based Scholarships

Need-based scholarships are granted as a percentage amount of tuition. Scholarships are awarded one academic year at a time.

### ELIGIBILITY

To be considered students must demonstrate:

- A seriousness of purpose and motivation.
- Consistent attendance and progress.
- Family income of less than \$98,000. We use a sliding discount scale that considers several factors, such as family size and extenuating circumstances in addition to income.

## About the Colburn Community School of Performing Arts

Founded in 1950 as an open-enrollment school, the Colburn Community School of Performing Arts serves students of all ages with classes in music, drama, and early childhood arts education taught by acclaimed faculty committed to providing the highest quality teaching on a modern campus designed for excellence in arts education and performance. The Colburn Community School of Performing Arts has been accredited by the National Association of Schools of Music (NASM) since 1980 and is also a member of the National Guild for Community Arts Education.

## Herbert Zipper Scholarships

This program offers a select number of highly motivated, deserving students scholarship funding to cover the duration of their enrollment in comprehensive music education until they graduate from high school. Herbert Zipper Scholars receive instruction in music theory, private lessons, and ensemble participation, among many other academic and performance opportunities.

### ELIGIBILITY

- 8–17 years old.
- Enrolled at an academic institution or home-schooled.
- At least two years of experience on student's choice of instrument in the form of private applied study or experience in an ensemble.
- A high level of interest and commitment to musical study.
- A successful audition along with a letter of recommendation and demonstrated academic commitment.
- Family income of less than \$98,000. We use a sliding discount scale that considers several factors, such as family size and extenuating circumstances in addition to income.
- Renewals are dependent on remaining in good standing throughout each year of study.

## Amplify Scholarships

As part of the Colburn School's commitment to diversity, a new scholarship was created to support Black and Latinx students who are traditionally underrepresented in jazz and classical music.

### ELIGIBILITY

To be eligible for the scholarship, the student must identify as Black or Latinx, AND have one of the following:

- High artistic merit as determined by the School

### OR

- Financial need as determined by Community School financial aid requirements.

This scholarship is not available to students enrolled in the Early Childhood program.

Amplify scholarships are highly competitive awards and are not guaranteed from year to year. Students wishing to receive funding in subsequent years will need to reapply for funding.

## Merit-Based Scholarships

The Community School offers select merit scholarship awards to pre-college aged students for ensembles, chamber music, and workshops. The selection process is determined annually by student performances, auditions, and a review of each student's progress throughout the course of the year.

# Academic Calendar

## OPEN HOUSE: Saturday, July 20, 2024

### 2024 FALL SEMESTER: (16 weeks)

#### Formal Registration Period:

Mon, July 1 – Sun, July, 14	Priority 2024-25 Annual Registration for Continuing Students
Mon, July 15, 2024	Open 2024-25 Annual Registration for All Students
Thur, Aug 1, 2024	Fall 2024 Fees & \$30 Registration Fee Begins
Saturday, August 24, 2024	First Day of FALL Semester Instruction
Mon, September 2	Labor Day Holiday – SCHOOL CLOSED
Tue, Nov 26 – Sun, Dec 1	Thanksgiving Break – NO CLASSES
Friday, December 20	Last Day of Fall Semester
Sat, Dec 21 – Fri, Jan 3	WINTER BREAK – NO CLASSES – SCHOOL CLOSED

### MID YEAR

Sat, Jan 4 – Sun, Jan 12	Semester Break – Make-Up Lessons – School Open
--------------------------	--

### 2025 SPRING SEMESTER: (16 weeks)

#### Formal Registration Period:

Mon, Dec 2 – Sun, Dec 15	Continuing Student Spring Registration for Early Childhood and Adult Classes
Mon, December 16	Open Spring Registration for All Students
Sat, January 11	Early Childhood Orientation for New Students
Monday, January 13	First Day of Spring Semester
Mon, January 20	Martin Luther King, Jr. Holiday – SCHOOL CLOSED
Mon, April 14 – Sun, April 20	SPRING BREAK – NO CLASSES
Tue, April 15	Priority Summer Registration for Continuing Students
Thur, May 1	Open Summer Registration for All Students
Monday, May 12	Last Day of SPRING Semester Instruction
Tue, May 13 – Mon, May 19	JURY WEEK – NO CLASSES OR PRIVATE LESSONS
Tue, May 20 – Mon, June 2	Semester Break - Make-Up Lessons – School Open
Mon, May 26	Memorial Day Holiday – NO CLASSES
Sat, May 31	Early Childhood Orientation for New Students

### 2025 SUMMER SESSION: Wednesday, June 4 – Friday, August 1

Summer at Colburn is a combination of camps, workshops, weekly group classes, and private instruction that are held in different time periods depending on the course of study.

Fri, July 4	Independence Day Holiday - No Classes – School Closed
-------------	---

Notice: All dates are subject to change. It is the responsibility of students and parents to note all calendar dates and schedule changes as they are posted. The Colburn School does not follow LAUSD or other school calendars. Please refer to [www.colburnschool.edu](http://www.colburnschool.edu) for calendar dates, schedule changes, registration information and policies. If a holiday is not listed above, it is not observed as an official school holiday.

\*JURY WEEK is not part of your lesson count. There are no group classes or private lessons scheduled this week.



Colburn School

# Open House

**REGISTER FOR FREE TODAY!**

Saturday, July 26, 2025  
10 am–4 pm  
Colburn School Campus

Explore everything the Community School of Performing Arts and Trudl Zipper Dance Institute have to offer before fall classes begin, in this fun-filled family event!

- Take a free trial class
- Enjoy music performances
- Meet the faculty
- Explore the instrument petting zoo
- Tour dance facilities

Free and open to the public.

New students receive a discount if they register at the Open House!

COLBURN  
  
SCHOOL

Learn more and register for a free trial class at  
[colburnschool.edu/openhouse](https://colburnschool.edu/openhouse)

