



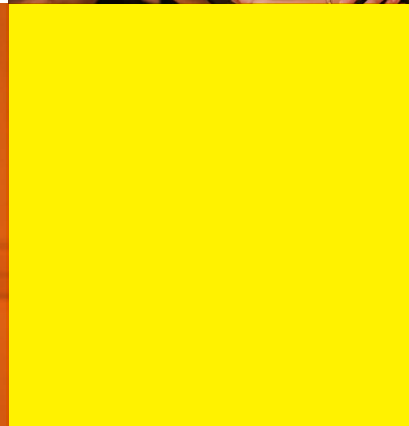
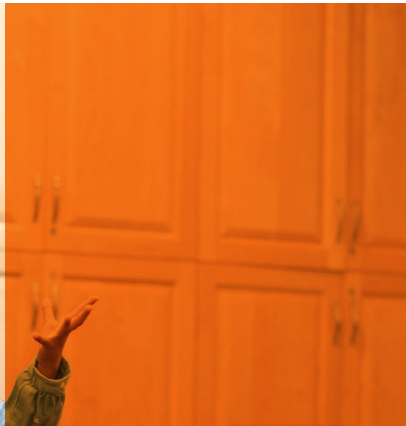
COLBURN SCHOOL

## COMMUNITY SCHOOL OF PERFORMING ARTS



# Course Catalog

2024–25 Academic Year



COLBURN  
SCHOOL

# Contents

---

About Us.....	3
Adaptive Music Program .....	4
Scholarships .....	5
Private Music Instruction .....	6–7
Early Childhood Creative Arts Program .....	8–9
Suzuki .....	10–11
Drama & Singing More .....	12
Choir .....	13
Group Instruction .....	14–15
<i>Group Guitar; Group Piano; Beginning Strings; Wind, Brass, Percussion</i>	
Chamber Music.....	16
Small Ensembles.....	17
Bands .....	18
Orchestras .....	19
Voice & Musical Theatre .....	20
Jazz.....	21
Music Theory .....	22
Dalcoroze .....	23
Composition & Conducting .....	24
Adult Classes .....	25
Academic Policies and Calendar.....	26–29





## Access to Excellence

The Colburn Community School of Performing Arts (CSPA) serves students of all ages with classes in music, drama, and early childhood arts education, taught by acclaimed faculty committed to providing the highest quality teaching on a modern campus designed solely for excellence in performance and education.

Founded in 1950 as an open-enrollment school, the CSPA covers a broad range of styles, age levels, and degrees of difficulty. Music classes include applied musical instruction, music theory, chamber ensemble, and orchestral opportunities. In addition to their individual studies, Colburn students participate in a variety of community outreach programs and perform in more than 300 concerts and recitals each year, many of which are free and open to the public.

The Colburn Community School of Performing Arts has been accredited by the National Association of Schools of Music (NASM) since 1980 and is also a member of the National Guild for Community Arts Education.

## Our Staff

Susan Cook	Dean
Timothy Lewis	Program Manager
Dan Gonda	Operations Specialist
Arnulfo Reyes	Marketing and Program Specialist
Ron Mitchell	Ensemble Coordinator and Student Services Specialist
Josiah Vietti	Ensemble and Student Services Coordinator
Kenia Agaton	Student Services Coordinator

## Contact Us

Email	<a href="mailto:cspa@colburnschool.edu">cspa@colburnschool.edu</a>
Phone	213-621-4548

## Office Hours (Room G-205)

Fall & Spring	Mon–Fri, 10 am–6 pm Sat, 8 am–4 pm Sun, Closed
Summer	Mon–Sat, 8 am–4 pm Sun, Closed





# Adaptive Music Program 4

## Private Instruction for Individuals with Special Needs



The Community School provides a special program for children and adults with academic or learning challenges. The Adaptive Music Program (AMP) provides individualized music programming and adapted music instruction taught by music specialist Ms. [Francesca Bori](#).



Students with special needs have the opportunity to learn to play a musical instrument within a therapeutic environment designed to develop one's own potential. This process begins with a structured music-based assessment of motor skills, behavioral, social and emotional levels, attention, and communication ability. Monthly meetings with parents and yearly written summaries provide an opportunity to review the progress of the student.

For more information, please contact Ms. Bori at [fbori@colburnschool.edu](mailto:fbori@colburnschool.edu).

COLBURN SCHOOL

**COMMUNITY SCHOOL  
OF PERFORMING ARTS**

[LEARN MORE](#)

[colburnschool.edu/adaptive-music](https://colburnschool.edu/adaptive-music)



# SCHOLARSHIPS AT THE COMMUNITY SCHOOL OF PERFORMING ARTS

The Colburn Community School of Performing Arts welcomes students of all skill levels and musical backgrounds. We understand that some students may need financial assistance to pursue their studies. Thanks to the generosity of local and national donors, as well as supporting foundations, we offer a range of scholarships for school-aged students enrolled in private lessons, ensembles, and group classes, helping to make quality music education accessible to all.

Scholarships are offered during the fall and spring semesters; we do not offer scholarships for the summer session. Scholarships are only available for students ages 7 months to 18 years, or grade 12 and under.

## Herbert Zipper Scholarships

Full-tuition scholarships designed for highly motivated students engaged in comprehensive music education. Recipients are required to participate in weekly music theory classes, private lessons, and ensembles. Scholarships are renewed annually through high school graduation, provided all requirements are met.

## Need-Based Scholarships

Designed for students requiring financial assistance, these scholarships cover 10–90% of tuition for group classes or private lessons on a sliding scale. Recipients must reapply annually.

## Merit-Based Scholarships

Merit-based scholarships are awarded annually to pre-college-aged students in recognition of exceptional performance and progress. These awards are available for participation in large ensembles, Fiddles on Fire, and the Honors Chamber program, with recipients selected through auditions and evaluations.



Check eligibility requirements and apply online at [colburnschool.edu/scholarships](https://colburnschool.edu/scholarships).



"The Herbert Zipper Scholarship has truly changed my life [...] Without this scholarship, I wouldn't have had the opportunity to continue developing my passion and skills in such a life-changing way."

LAL BESIR,  
HERBERT ZIPPER  
SCHOLAR RECIPIENT

## APPLY FOR 2025–26 SCHOLARSHIPS

MARCH 1, 2025

Scholarship application opens online

APRIL 15, 2025

Herbert Zipper application deadline

MAY 1, 2025

Need-Based Scholarship application deadline\*

\*Late applications are accepted on a rolling basis

## 2024–25 TUITION FEES FOR 32 WEEKS

30 min	\$2,752
45 min	\$3,936
60 min	\$5,024
90 min	\$7,360

## PROMOTIONAL DISCOUNTS FOR 2024–25

The school is also providing a promotional discount on **woodwind**, **brass**, and **percussion** private lessons. The rates for 32 lessons are listed below.

30 min	\$2,416
45 min	\$3,232
60 min	\$4,160

## SPECIAL MUSIC THEORY DISCOUNT

Students enrolled in private lessons at Colburn receive 50% off of their music theory tuition!\*

Music theory is essential for building a strong foundation in any young musician's education, and we strongly encourage all students to enroll. Learn more about Music Theory on page 22.

\*Discount is only applicable once per student, and is only valid for year-long enrollments. This discount cannot be applied to pro-rated music theory tuition.

## Explore your potential at Colburn— submit your inquiry today!

The Colburn Community School of Performing Arts offers personalized, one-on-one instruction for students of all ages and skill levels on any instrument, including voice. Our expert faculty help students develop their technique, musicianship, and confidence in a supportive environment.

School-aged private lesson students gain exclusive access to performance opportunities, including Friday Night Recitals, Winter and McAllister Honors Recitals, and master classes with renowned guest artists. They also enjoy a 50% tuition discount on music theory group classes, which provide essential tools for understanding and mastering their craft.

## How to Get Started

New students may join at any time during the year. Submit an Inquiry Form at [colburnschool.edu/inquiry](https://colburnschool.edu/inquiry), and a department chair will contact you within seven business days to arrange an informal interview or audition for placement.

## Lesson Details

### SCHEDULE

Lessons are arranged directly with the instructor.

### COMMITMENT

School-aged students register for the full academic year (32 lessons). Adults may register for any number of lessons as agreed upon by the instructor.

### 2024–25 ACADEMIC YEAR

August 24–May 12

Makeup weeks January 4–12 and May 20–June 2.

### 2025 SUMMER SESSION

June 4–August 1, with special discounted packages.

## Faculty

### Bassoon BSPI

Beene, Richard\*  
Kuhlmann, Evan

### Cello VCPI

Bori, Francesca  
Cho, Stella  
Gasparyan, Vardan  
Greensmith, Clive\*  
Kessler, Carlyn  
Kiefer, Martha  
Koo, Sarah  
Lash, Ben  
Naill, Richard  
Wright, Elizabeth  
Yamagata, Nancy

### Clarinet CLPI

Gilad, Yehuda  
Wellwood, William  
Yoshimi, Michael

### Conducting COND

Núñez, Eleanor

### Dalcroze DLPI

Izumi, Mari

### Double Bass DBPI

Baird, Ryan  
Botsford, Ted  
Young, David

### Flute FLPI

Lundgren, Karen  
Tanner, Chelsea

### Guitar GTPI

Sheu, Connie  
Young, Erin  
Youngstrom, Kenton

### Harp HPPI

Turovsky, JoAnn\*

### Horn HNPI

Ondarza, Danielle  
Upton, Elizabeth

### Jazz Piano JPPI

Kinnon, Liz

### Jazz Saxophone JSPI

Secard, Lee

### Music Theory MTPI

Sawada, Kathy

### Music Composition CPPI

Eremiasova, Michaela  
Nelson, Jordan

### Oboe OBPI

Sugata, Ted

### Percussion PCPI

Kalaf, Jerry  
McGrath, Kenneth  
Ordaz, Matt

### Piano PNPI

Bori, Francesca  
Cheli, Dominic  
de Jong-Pombo, Teresa  
Dokshitsky, Rina  
Fadial, Vanessa  
Gilmour, John  
Glicklich, Carmina  
Grodin, Sam  
Grubelic Malo, Ivana  
Huang, Grace  
Hudson, Natalia  
Izumi, Mari  
Kapouler-Gartner, Inga  
Kim, Hyejin  
Kim, Miji  
Kwon, Heewon  
Lavner, Jeffrey  
Leone, Rodolfo  
Martínez-Antón, Régulo  
Rhee, Yung Mee  
Wu, Hui  
Yui, Micah

### Saxophone SXPI

Hallberg, John  
Pittel, Harvey\*  
Secard, Lee

### Trombone TBPI

Suminski, Shelly

### Trumpet TPPI

Zonshine, Mike

### Tuba TUPI

Tornquist, Douglas

### Viola VAPI

Cha, Keum Hwa  
Coletti, Gina  
Granger, Alex  
Picken, Andrew  
Shimasaki, Rumi  
Shimizu, Margaret

### Violin VNPI

Cha, Keum Hwa  
Cadow, Sherry  
Fischer, Sam  
Granger, Alex  
Gronnier, Henry  
Kastner, Gallia  
Kennedy, Carrie  
Kim, Sofia  
Kim, So Jin  
Kreston, Aimée  
Kwuon, Joan  
Lee, Joanna  
Lipsett, Robert\*  
Lavner, ShihLan  
Olevsky, Dimitry  
Schwabe, Richard  
Simeonov, Moni  
Shimasaki, Rumi  
Shimizu, Margaret  
Yun, Chan Ho

### Voice VOPI

Dunn, Adrian  
Johnson, Craig  
Oliver, Jessie  
Stevens, Michael

\*Master Rate Instructor (special rates apply).

## SING, MOVE, AND PLAY

Embark on your child's journey  
in the performing arts!

We offer a sequential curriculum  
designed to support the cognitive,  
creative, and social development of  
children ages 7 months to 7 years.



### Get to Know the Department Chair, Dr. Nita Baxani

Dr. Nita Baxani has held leadership roles in arts programs and schools in both the United States and Germany. She received a Doctor of Education degree from Teachers College, Columbia University, where her dissertation focused on the musicality of infants within a childcare community. Her work in creating new programs and curriculum design is collaborative in nature and covers a variety of pedagogical approaches that foster an inclusive child-centered environment. As an arts advocate, Dr. Baxani enjoys creating programs and cultivating partnerships with schools and community and cultural organizations.

## Benefits for Children and Parents

Classes employ developmentally appropriate materials to encourage growth in key areas such as: social and emotional development, cognition, and motor skills. Caregivers are a child's first teachers, so your involvement in our classes is crucial to your child's progression through the curriculum. By attending classes with your child, you will continue to strengthen the connection with your child while laying a foundation for their continued artistic growth at Colburn. One of our goals is to support students as they work towards independence. As your child progresses through the curriculum, the level of your involvement in class may change.



New students must submit an inquiry for class placement prior to enrolling.

[Submit an inquiry online here!](#)







Course Name / ID	Description	Ages	Fee
Babes in Colburnland ECGA101	Our specially-trained instructors work with parents and infants to cultivate developmental listening skills with activities to help children absorb music concepts. Teachers design sensory experiences to fascinate and captivate children. As classes progress, infants move from being merely receptive to engaging in an active role.	7–17 mo	\$580
Making Music in Colburnland ECMC101	This family-oriented class encourages toddlers to become actively engaged in making music. Through the use of nursery poems and songs, children explore various musical traditions and styles.	18–24 mo	\$580
Musical Play ECMP201	As toddlers gain more motor development skills, they're more likely to want to move, and this class encourages them to explore movement through music and imagination. Teachers also work with the young students to improve listening skills through play, songs, stories, and games.	2–3 yr	\$580
Musical Play (ESP) ECMP202	A medida que los niño/a(s) pequeños adquieren más habilidades de desarrollo motor, es más probable que quieran moverse, y esta clase los alienta a explorar el movimiento a través de la música y la imaginación. Los maestro/a(s) también trabajan con los jóvenes estudiantes para mejorar sus habilidades auditivas a través de juegos, canciones, cuentos y juegos.	2–3 yr	\$580
Creative Storymaking & Movement ECST101	Students are treated to games and stories that will trigger their imagination, individual expression, and language skills. They engage in exercises to develop body awareness, concentration, group cooperation, coordination, and balance. Activities utilize rhythmic verbalization, pantomime, dramatic play, and creative movement.	3–3.5 yr	\$615
Super Singers ECSS101	Super Singers begin working on vocal techniques through games, songs, and stories. Our knowledgeable teachers help students produce good tone quality and improve diction as well as correct vocal placement and singing in the proper register. They also introduce basic elements of music, such as tempo, dynamics, rhythm, phrasing, timbre, and style.	3–5 yr	\$615
Rhythm and Movement ECRM101	Rhythm helps give movement purpose. In this class, preschool-age children learn to direct their energy into basic rhythms and rhythmic patterns while also improving listening and motor skills. They're also shown proper playing techniques for small percussion instruments used in classroom exercises.	3.5–5 yr	\$615
Rhythmic Styles & Techniques ECRS102	Classes are designed to initiate instrument instruction with a concentration on various rhythmic styles and techniques on Orff and percussion instruments. Teachers work with students to improve muscle and hand-eye coordination as well as a growing awareness of rhythmic and melodic patterns. Students even begin rhythmic notation reading. Creativity is promoted through improvisation activities.	4–5.5 yr	\$615
Exploring the Keys ECEK101	The class provides musical experiences in the development of motor and ear-training skills, hand-eye coordination, a sense of keyboard geography, finger dexterity, and concentration. This course offers pre-reading exercises to develop the child's keyboard sense. Students must have access to an acoustic piano or keyboard for daily practice.	4–5 yr	\$565
Sing, Move & Play! ESSM100	This course provides a foundation of music skills structured through critical listening, singing, creative movement, and playing a variety of unpitched and pitched instruments. Students will develop musicianship skills that prepare them to explore a variety of music while building music concepts such as rhythm, melody, dynamics, and form.	5–6 yr	\$615
Singing More ECSM200	Through interactive games, songs, and stories, students develop singing skills, explore vocal techniques, and learn basic elements of music. An extension of Super Singers, this class will work towards building a basic foundation for ensemble singing. This class is yearlong.	5–7 yr	\$1,125





## Suzuki Program

Colburn's Suzuki Program, based on the method founded by Japanese violinist Dr. Shinichi Suzuki, embraces the philosophy that every child is born with musical potential that can be nurtured to a high level. This method emphasizes parent involvement in lessons and daily practice, fostering a deep commitment to learning. Through weekly private lessons and group classes for violin, cello, and guitar, students build strong technical foundations, ensemble skills, and artistry.

Open to children as young as four for strings and five for guitar, the program inspires musical growth through recitals, master classes, and dedicated practice. This teaching method involves parent participation both in lessons and daily practices at home, and requires a major commitment of time.

FAMILIES INTERESTED IN APPLYING FOR THE 2025–26  
ACADEMIC YEAR MUST SUBMIT AN ONLINE INQUIRY  
BY JANUARY 15, 2025.



Submit an Inquiry  
[colburnschool.edu/inquiry](https://colburnschool.edu/inquiry)  
[cspa@colburnschool.edu](mailto:cspa@colburnschool.edu)



## Suzuki Strings

Course Name / ID	Age	Day	Pre-Requisites	Minutes	Fee
Suzuki Group - Cello SZGC101	4–18 yr	We	Submit an inquiry for placement prior to enrolling.	120	\$670
Suzuki Group - Violin SZGN101	4–18 yr	We	Submit an inquiry for placement prior to enrolling.	120	\$670

Scan orange QR codes for detailed course information or visit: [colburn.asapconnected.com](https://colburn.asapconnected.com)





## Suzuki Guitar

Course Name / ID	Age	Day	Additional Information	Minutes	Fee
Suzuki Guitar Group A SZGT100	4–9 yr	Mo	Instructor approval required. Email Connie Sheu at <a href="mailto:csheu@colburnschool.edu">csheu@colburnschool.edu</a>	45	\$670
Suzuki Guitar Group B SZGT101	5–9 yr	Mo	Instructor approval required. Email Connie Sheu at <a href="mailto:csheu@colburnschool.edu">csheu@colburnschool.edu</a>	45	\$670
Suzuki Guitar Group C: Sight Reading and Musicianship SZGT300	7–10 yr	Mo	Instructor approval required. Email Connie Sheu at <a href="mailto:csheu@colburnschool.edu">csheu@colburnschool.edu</a>	45	\$670
Guitar Orchestra SGGO101	10–16 yr	Tu	Instructor approval required. Email Connie Sheu at <a href="mailto:csheu@colburnschool.edu">csheu@colburnschool.edu</a>	45	\$1,115
Intermediate Guitar Quartet SZGQ401	Varies	Mo	Instructor approval required. Email Erin Young at <a href="mailto:eyoung@colburnschool.edu">eyoung@colburnschool.edu</a>	45	\$1,235



## Add-On Classes for Suzuki Students

Course Name / ID	Age	Day	Additional Information	Minutes	Fee
Cello Choir ENCC101	9–18 yr	We	Audition required. Email Carlyn Kessler at <a href="mailto:ckessler@colburnschool.edu">ckessler@colburnschool.edu</a>	50	\$1,095
Dalcroze for Suzuki DALC201.01	Varies	We	Submit an inquiry for placement prior to enrolling.	35	\$580
Violin Ensemble ENVE100	8–15 yr	We	Audition required. Submit an inquiry online.	40	\$1,000
String Ensemble ENSE200	10–18 yr	We	Audition required. Email Rebecca Frazier at <a href="mailto:rfrazier@colburnschool.edu">rfrazier@colburnschool.edu</a>	50	\$1,095
String Orchestra ENSO300	11–18 yr	We	Audition required. Email Rebecca Frazier at <a href="mailto:rfrazier@colburnschool.edu">rfrazier@colburnschool.edu</a>	90	\$1,295



# Drama & Singing More 12



## Drama

The Drama program at the Community School focuses on the process of learning so that students can build confidence and are inspired to take creative risks. The acting classes begin with improvisation, body movement, and theater games, and progress to monologue, scene work, script analysis, and character development. The program strongly emphasizes process over product, creating a learning environment in which students are free to explore and work without fear of judgment.



Course Name / ID	Age	Day	Additional Information	Minutes	Fee
Creative Dramatics DRCD101	5–7 yr	Sa	N/A	25	\$1,000
Drama I DRCL101	8–11 yr	Sa	N/A	55	\$1,215
Drama II DRCL201	12–16 yr	Sa	N/A	55	\$1,215



## Singing More

Through interactive games, songs, and stories, students will develop essential singing skills, explore vocal techniques, and learn the basic elements of music. As an extension of Super Singers, this class focuses on building a strong foundation for ensemble singing, making it an excellent way for young singers to prepare for the Children's Chorus, which they can join at age 7.



Course Name / ID	Age	Day	Additional Information	Minutes	Fee
Singing More ECSM200	5–7 yr	Sa	Instructor approval required. Email Nita Baxani at <a href="mailto:nbaxani@colburnschool.edu">nbaxani@colburnschool.edu</a>	45	\$1,125

Scan orange QR codes for detailed course information or visit: [colburn.asapconnected.com](https://colburn.asapconnected.com)

COLBURN SCHOOL

COMMUNITY SCHOOL  
OF PERFORMING ARTS

REGISTER NOW

[colburnschool.edu/register](https://colburnschool.edu/register)  
[cspa@colburnschool.edu](mailto:cspa@colburnschool.edu)







## Meet the Director of Choral Programs, Adrian Dunn

Adrian Dunn is an accomplished Grammy Award winner, singer, composer, and conductor. Mr. Dunn holds a Bachelor of Music and Master of Music degree in Voice from the Music Conservatory at Roosevelt University with additional musical studies in opera at the Sibelius Academy of Music in Finland.



### Choral Program

Course Name / ID	Age	Day	Additional Information	Minutes	Fee
Singing More ECSM200	5–7 yr	Sa	Instructor approval required. Email Nita Baxani at <a href="mailto:nbaxani@colburnschool.edu">nbaxani@colburnschool.edu</a>	45	\$1,125
Children's Chorus VEPT100	7–10 yr	Sa	Audition required. Email Ron Mitchell at <a href="mailto:rmitchell@colburnschool.edu">rmitchell@colburnschool.edu</a>	50	\$1,215
Youth Chorus VEYP200	10–14 yr	Sa	Audition required. Email Ron Mitchell at <a href="mailto:rmitchell@colburnschool.edu">rmitchell@colburnschool.edu</a>	90	\$1,405
Colburn Concert Choir VECC400	14–20 yr	Sa	Audition required. Email Ron Mitchell at <a href="mailto:rmitchell@colburnschool.edu">rmitchell@colburnschool.edu</a>	180	\$2,595
Colburn Concert Choir for Private Voice Students VECC401	14–20 yr	Sa	Discounted tuition rate for students enrolled in private voice lessons at Colburn. Audition required.	180	\$500

## The Colburn Concert Choir 2025 Tour

The Colburn Concert Choir is honored to participate in the National Memorial Day Choral Festival, a prestigious event held from May 22 –26, 2025. This four-night, five-day tour will provide students with the opportunity to perform in iconic venues, explore historic landmarks, and partake in enriching cultural experiences.





## Group Guitar

The Community School also offers group classes for ages five through adult. These classes offer students with a range of experience levels a safe and supportive environment to learn guitar technique and musicianship.



Course Name / ID	Age	Day	Pre-Requisites	Minutes	Fee
Group Guitar - Beginner I GTGC101-01	6–14 yr	Sa	N/A	55	\$1,235
Group Guitar - Beginner II GTGC102-01	Varies	Sa	N/A	55	\$1,235
Group Guitar - Intermediate GTGC201-01	Varies	Sa	N/A	55	\$1,235
Group Guitar - Advanced GTGC301-01	Varies	Sa	N/A	55	\$1,235



## Group Piano

Group piano classes are ideal for the absolute beginner with no prior experience. Students must own an electric keyboard or piano at home. Registration is open to both continuing and new students. It is recommended that student only take group piano for one to two years of study, after which that the student should inquire to be placed with a private instructor.

Course Name / ID	Age	Day	Additional Information	Minutes	Fee
Group Piano - Introduction to the Piano PNGL100	5–6 yr	Sa	N/A	45	\$1,235
Group Piano - Beginning I PNGL101	6–10 yr	Sa	N/A	45	\$1,235
Group Piano - Beginning II PNGL102	6–10 yr	Sa	N/A	45	\$1,235
Group Piano - Intermediate I PNGL201	7–12 yr	Sa	N/A	45	\$1,235
Group Piano - Intermediate II PNGL301	7–12 yr	Sa	N/A	45	\$1,235
Introduction to Piano for Future Music Majors PNGL401	14+ yr	Sa	N/A	55	\$1,235





## Beginning Strings

Students who are new to learning string instruments can take one of our group classes for young beginners.

Course Name / ID	Age	Day	Additional Information	Minutes	Fee
Beginning Group Viola VAIN100	7–10 yr	Sa	N/A	50	\$1,235
Intermediate Group Viola VAIN200	7–10 yr	Sa	Email Alex Granger at <a href="mailto:agranger@colburnschool.edu">agranger@colburnschool.edu</a> prior to enrolling.	50	\$1,235



## Wind, Brass, and Percussion

The Woodwinds, Brass, and Percussion Department offers flute, oboe, clarinet, bassoon, saxophone, horn, trumpet, trombone, tuba, and percussion lessons. Whether you are already proficient in your instrument, or a beginner, you can find excellent training at the Colburn School individualized to your needs.



Course Name / ID	Age	Day	Additional Information	Minutes	Fee
Group Low Brass Beginners JSLB23	9–11 yr	Tu	N/A	60	\$1,235
Group Percussion JSGP2324	9–11 yr	Th	N/A	45	\$927

Scan orange QR codes for detailed course information or visit: [colburn.asapconnected.com](https://colburn.asapconnected.com)



The Ed and Mari Edelman Chamber Music Institute offers one of the most comprehensive and intense pre-college level chamber music learning experiences of any music school in North America, with weekly coachings from Colburn's renowned faculty and numerous performance opportunities. Ensembles have won top prizes in competitions like Fischhoff and Coltman and performed on Public Radio International's *From the Top* and with the Chamber Music Society at Lincoln Center.



## Intro to Chamber Music Program

Course Name / ID	Age	Day	Additional Information	Minutes	Fee
Introduction to Chamber Ensemble CHMI100	8–12 yr	Varies	Audition required. Email Martin Glicklich at <a href="mailto:mglicklich@colburnschool.edu">mglicklich@colburnschool.edu</a>	24 Sessions (45m coaching + 15m rehearsal)	\$1,145



## Fiddles on Fire



## Chamber Music Program

Course Name / ID	Age	Day	Additional Information	Minutes	Fee
Chamber Music Ensemble CHMI101	13–18 yr	Varies	Audition required. Email Moni Simeonov at <a href="mailto:ssimeonov@colburnschool.edu">ssimeonov@colburnschool.edu</a>	24 Sessions (60m coaching + 60m rehearsal)	\$1,285



## Honors Program

[LEARN MORE](#)

The Honors program is for serious and dedicated young musicians for whom music is the top priority. Time commitment is for a minimum of three hours of rehearsal and coaching weekly. In addition, there is a required Honors Chamber Music Seminar, held on Saturday afternoons. Honors groups have regular performing opportunities on the Friday Night, School and Honors Recitals and also in the greater community. All groups are encouraged to enter competitions and are expected to make the necessary preparations. Weekends must be kept open and flexible for frequent performances, master classes and competitions.







## Small Ensemble

The Community School of Performing Arts offers a variety of ensembles that give students of all skill levels the opportunity to collaborate with their peers in smaller arrangements.



Course Name / ID	Age	Day	Additional Information	Minutes	Fee
Cello Choir ENCC101	9–18 yr	We	Audition required. Email Carlyn Kessler at <a href="mailto:ckessler@colburnschool.edu">ckessler@colburnschool.edu</a>	50	\$1,095
Double Bass Ensemble DBEN101	13–18 yr	Su	Instructor approval required. Email Ryan Baird at <a href="mailto:rbaird@colburnschool.edu">rbaird@colburnschool.edu</a>	90	\$1,150
Guitar Ensemble GTEN101	15+ yr	Tu	Instructor approval required. Email Kenton Youngstrom at <a href="mailto:kyoungstrom@colburnschool.edu">kyoungstrom@colburnschool.edu</a>	60	\$1,235
Violin Ensemble ENVE100	8–15 yr	We	Audition required. Submit an inquiry online.	40	\$1,000



## Honors Piano Seminar

October 19 | February 8 | March 8 | April 26 | May 24

The Honors Piano Seminar is a unique combination of lectures and master classes designed to help students develop an individual style and personality in performances. The seminar will feature presentations and master classes with world renowned pedagogues. Participating students must be age 13 and up. Contact Teresa de Jong-Pombo at [tdejongpombo@colburnschool.edu](mailto:tdejongpombo@colburnschool.edu) for more information.





Meet the  
Director of Bands  
and Orchestras,  
Eleanor Núñez

Eleanor Núñez is a Spanish-American conductor, pianist, and educator currently based in Southern California. She had her international debut in August 2022 with the Orquesta Sinfónica de la Ciudad de Asunción in Asunción, Paraguay, where she conducted Piano Concerto No. 2 in F Minor by Frédéric Chopin with soloist Chiara D’Odorico as well as the debut of Symphony No. 1 by the prolific composer Daniel Luzko.

Ms. Nunez programs unique concerts that bridge the gap between the audience and musicians on stage. Her belief that music should be accessible to all shines through her creative repertoire programming, enthusiastic rehearsals, and inviting concert environment. Musically, Ms. Nunez loves exploring “the classics” and pairing them with new, modern works. Her conducting experience spans orchestral, wind ensemble, and choral repertoires since she enjoys working with musical groups of all disciplines and genres.



Bands

Course Name / ID	Age	Day	Additional Information	Minutes	Fee
Concert Band ENCB100	11–18 yr	Sa	Audition required. Email Arnulfo Reyes at <a href="mailto:areyes@colburnschool.edu">areyes@colburnschool.edu</a>	150	\$1,145
Wind Ensemble ENWE200	13–18 yr	Sa	Audition required. Email Arnulfo Reyes at <a href="mailto:areyes@colburnschool.edu">areyes@colburnschool.edu</a>	150	\$1,145

Scan orange QR codes for detailed course information or visit: [colburn.asapconnected.com](https://colburn.asapconnected.com)



The Community School offers a comprehensive pre-college orchestral program, comprised of four ensembles ranging from intermediate to advanced level. Middle school-aged students can join the String Ensemble and String Orchestra, both directed by Rebecca Frazier. Advanced middle school and high school-aged students of all symphonic instruments can join the Colburn Sinfonietta and Colburn Youth Orchestra, directed by Eleanor Núñez. Members of each ensemble are selected through competitive auditions each year, and they perform several concerts throughout the academic year both on and off campus.



## String Ensemble and String Orchestra

Course Name / ID	Age	Day	Additional Information	Minutes	Fee
String Ensemble ENSE200	10–18 yr	We	Audition required. Email Rebecca Frazier at <a href="mailto:rfrazier@colburnschool.edu">rfrazier@colburnschool.edu</a>	50	\$1,095
String Orchestra ENSO300	11–18 yr	We	Audition required. Email Rebecca Frazier at <a href="mailto:rfrazier@colburnschool.edu">rfrazier@colburnschool.edu</a>	90	\$1,295



## Advanced Orchestras

Course Name / ID	Age	Day	Additional Information	Minutes	Fee
Colburn Sinfonietta ENCS400	13–18 yr	Su	Audition required. Email Josiah Vietti at <a href="mailto:jvietti@colburnschool.edu">jvietti@colburnschool.edu</a>	165	\$1,725
Colburn Youth Orchestra ENYO300	13–18 yr	Su	Audition required. Email Josiah Vietti at <a href="mailto:jvietti@colburnschool.edu">jvietti@colburnschool.edu</a>	165	\$1,725





## Voice

At the Colburn School, we teach young vocalists to master their instrument through private voice lessons, vocal classes, and choirs. Our experienced faculty helps students realize physical awareness, performance, and audition etiquette while advancing and improving vocal techniques.



Course Name / ID	Age	Day	Additional Information	Minutes	Fee
Acting the Song SING201	14–18 yr	Sa	Instructor approval required. Email Mike Stevens at <a href="mailto:mstevens@colburnschool.edu">mstevens@colburnschool.edu</a>	60	\$1,225
Diction for Singers CSDS101	14–18 yr	Th	N/A	60	\$1,085



## Musical Theatre

The Community School's Musical Theatre program is designed for students ages 14–18 who have a passion for singing, dancing, and acting. This is a program for the triple threat artist to deepen their skill level in voice, dance, and acting, and to provide the skills needed to seamlessly shift back and forth between the three. Our High School Musical Theatre program meets on Sundays from 1–4:30 pm and helps to prepare serious Musical Theatre artists to be competitive in an ever-growing field and prepares them for college auditions.

Our weekly workshop includes a full dance class that rotates jazz, modern, and ballet dance throughout the year. This is followed by a two-hour session that concentrates on group song repertoire, acting, and choreography. Musical Theatre students are instructed on how to connect detailed acting skills to the song and dance. The workshop presents two performances per year.

Course Name / ID	Age	Day	Additional Information	Minutes	Fee
Acting the Song SING201	14–18 yr	Sa	Can be taken á la carte	30	\$1,225
High School Musical Theater Dance DIMIT105	13–18 yr	Su	Can be taken á la carte	90	\$1,085
High School Musical Theatre Workshop MTWS200	13–18 yr	Su	Audition required for full program. Email Denise Scheerer at <a href="mailto:dscheerer@colburnschool.edu">dscheerer@colburnschool.edu</a>	210	\$3,765







## Jazz Workshops

The Community School's jazz program, known as the Colburn Jazz Workshop, is dedicated to encouraging students to explore the art of improvisation and ultimately even develop into composers, as well. Students can develop their skills through jazz music lessons, playing in an ensemble, or enrolling in a theory class.



Course Name / ID	Age	Day	Additional Information	Minutes	Fee
Monday Night Band JZMN400	14–18 yr	Mo	Instructor approval required. Email Lee Secard at <a href="mailto:lsecard@colburnschool.edu">lsecard@colburnschool.edu</a>	115	\$1,225
Thursday Night Band JZTN400	14–18 yr	Th	Instructor approval required. Email Lee Secard at <a href="mailto:lsecard@colburnschool.edu">lsecard@colburnschool.edu</a>	55	\$1,225
Saturday 11 AM Band JZSA102	11–18 yr	Sa	Instructor approval required. Email Lee Secard at <a href="mailto:lsecard@colburnschool.edu">lsecard@colburnschool.edu</a>	115	\$1,225
Saturday 2 PM Band JZST200	11–18 yr	Sa	Instructor approval required. Email Lee Secard at <a href="mailto:lsecard@colburnschool.edu">lsecard@colburnschool.edu</a>	115	\$1,225
Sunday 11 AM Band JZSN100	11–18 yr	Su	Instructor approval required. Email Lee Secard at <a href="mailto:lsecard@colburnschool.edu">lsecard@colburnschool.edu</a>	115	\$1,225
Sunday 2 PM Band JZSN300	11–18 yr	Su	Instructor approval required. Email Lee Secard at <a href="mailto:lsecard@colburnschool.edu">lsecard@colburnschool.edu</a>	115	\$1,225
Colburn Jazz Workshop Big Band JZBB400	14–18 yr	Tu	Instructor approval required. Email Lee Secard at <a href="mailto:lsecard@colburnschool.edu">lsecard@colburnschool.edu</a>	115	\$1,225



## Adult Jazz Workshops

Course Name / ID	Age	Day	Additional Information	Minutes	Fee
Adult Jazz Workshop JZAC100	Adults	Su	Instructor approval required. Email Liz Kinnon at <a href="mailto:ekinnon@colburnschool.edu">ekinnon@colburnschool.edu</a>	135	\$535





## Music Theory

Music theory at the Community School of Performing Arts is a singing-based curriculum designed to enhance and support instrumental and vocal study through active engagement and kinesthetic exploration. From pre-reading exposure classes to 20th-century atonality, music theory classes deepen understanding of the musical process and strengthen artistic expression and performance.

Music theory and Dalcroze classes are designed to be taken simultaneously or one at a time to accommodate each individual's pace and progress. In the same way, upper-level music theory classes are compatible with simultaneous compositional study as well as advanced Dalcroze study.



Course Name / ID	Age	Day	Additional Information	Minutes	Fee
Intro/Elementary Music Theory IA MTL201-01	Varies	Varies	Submit an inquiry for placement prior to enrolling.	55	\$1,300
Elementary Music Theory IB MTL203	Varies	Varies	Submit an inquiry for placement prior to enrolling.	55	\$1,300
Elementary Music Theory IC MTL204	Varies	Varies	Submit an inquiry for placement prior to enrolling.	55	\$1,300
Elementary Music Theory II MTL205	Varies	Varies	Submit an inquiry for placement prior to enrolling.	55	\$1,300
Intermediate Ear Training MTIE101	Varies	Varies	Submit an inquiry for placement prior to enrolling.	55	\$1,300
Introduction to Music Theory MTIN101	Varies	Varies	Submit an inquiry for placement prior to enrolling.	55	\$1,300
Intermediate Theory I MTIM301	Varies	Varies	Submit an inquiry for placement prior to enrolling.	55	\$1,300
Intermediate Theory II/AP Theory MTIM303	Varies	Varies	Submit an inquiry for placement prior to enrolling.	55	\$1,300
Music Theory: Advanced I MTAV501	Varies	Varies	Submit an inquiry for placement prior to enrolling.	55	\$1,300
Music Theory: Advanced II MTAV502	Varies	Varies	Submit an inquiry for placement prior to enrolling.	55	\$1,300
Music Theory: Advanced III MTAV504	Varies	Varies	Submit an inquiry for placement prior to enrolling.	55	\$1,300
Music Theory: Advanced IV MTAV506	Varies	Varies	Submit an inquiry for placement prior to enrolling.	55	\$1,300
Older Beginners MTOB101	12+ yr	Varies	Submit an inquiry for placement prior to enrolling.	55	\$650





## Dalcroze

The Dalcroze philosophy relies on solfege, eurhythmics, and improvisation, which lay the foundation for students serious about instrumental and vocal study. Class activities include vocal awareness, ear training, and sight-singing as well as rhythmic movement. Improvisational works unlock students' innate musicality and develop musical security while a kinetic approach builds up "muscle memory," a trait key to the spontaneous musician. Students' own discovery in music brings joyful and powerful musicianship.

Course Name / ID	Age	Day	Additional Information	Minutes	Fee
Introduction to Dalcroze DCIN100	Varies	Sa	Submit an inquiry for class placement prior to enrolling.	50	\$1,185
Dalcroze for Suzuki DALC201.01	Varies	Su	Submit an inquiry for class placement prior to enrolling.	35	\$580
Dalcroze I (Eurhythmics) DALC101	Varies	Th	Submit an inquiry for class placement prior to enrolling.	50	\$1,185
Dalcroze II (Rhythmic Solfege) DALC201	Varies	Sa	Submit an inquiry for class placement prior to enrolling.	50	\$1,185
Dalcroze III (Rhythmic Solfege)* DALC301	Varies	Sa	Submit an inquiry for class placement prior to enrolling.	55	\$1,300
Dalcroze IV (Rhythmic Solfege)* DALC401	Varies	Sa	Submit an inquiry for class placement prior to enrolling.	55	\$1,300
Introductory Dalcroze Eurhythmics for Music Teachers DALCMT	Adults	Su	Submit an inquiry for class placement prior to enrolling.	90	\$220
Eurhythmics for Music Teachers DIME102	Adults	Su	Submit an inquiry for class placement prior to enrolling.	90	\$300
Solfege and Improvisation for Music Teachers DIME101	Adults	Su	Submit an inquiry for class placement prior to enrolling.	90	\$300

Scan orange QR codes for detailed course information or visit: [colburn.asapconnected.com](https://colburn.asapconnected.com)



# Composition & Conducting — 24



## Composition

Course Name / ID	Age	Day	Additional Information	Minutes	Fee
Introduction to Composition CPIN101	Varies	We	Placement test is required prior to enrolling.	90	\$1,700
Introduction to Songwriting MTSW200	Varies	Tu	Instructor approval required prior to enrolling. Email Michaela Eremiasova at <a href="mailto:meremiasova@colburnschool.edu">meremiasova@colburnschool.edu</a>	90	\$1,700



## Conducting

The Director of Bands and Orchestras, Eleanor Núñez, takes students on a journey through the elements of conducting technique in order to begin to appreciate the relationship between gesture and sound.

To enroll in conducting lessons or classes, students must currently be an instrumentalist or vocalist at an intermediate to advanced level. Classes and lessons are ideal for students who have been enrolled in chamber music, orchestra, or vocal ensemble programs.



Course Name / ID	Age	Day	Additional Information	Minutes	Fee
Introduction to Instrumental Conducting ORCH101	15-25 yr	Su	Students must currently be an instrumentalist or vocalist at an intermediate or advanced level.	55	\$1,160
Instrumental Conducting for Adults ORCH102	Adults	Su	Students must currently be an instrumentalist or vocalist at an intermediate or advanced level.	55	\$1,160







## Adult Ensembles and Group Classes

At the Colburn Community School of Performing Arts, we offer a wide range of learning and performance opportunities for students ages 18 and up. Whether you're looking to join an adult ensemble, take private lessons, or learn about music fundamentals so that you can support your child's music education, our program is the place for you!



Course Name / ID	Age	Day	Additional Information	Minutes	Fee
<b>Adult Flute Choir</b> FLCH200	Adults	Mo	Instructor approval required. Email Karen Lundgren at <a href="mailto:klundgren@colburnschool.edu">klundgren@colburnschool.edu</a>	60	\$300
<b>Adult Jazz Workshop</b> JZAC100	Adults	Su	Instructor approval required. Email Liz Kinnon at <a href="mailto:ekinnon@colburnschool.edu">ekinnon@colburnschool.edu</a>	135	\$535
<b>Adult Beginning Guitar</b> GTAG101	Adults	Tu	N/A	55	\$545
<b>Adult Intermediate Guitar</b> GTAG201	Adults	Tu	N/A	55	\$545
<b>Adult Group Piano Beginning I</b> PNAG101	Adults	Tu	N/A	55	\$545
<b>Introductory Dalcroze Eurhythmics for Music Teachers</b> DALC-MT	Adults	Su	This course is designed for music educators. Class meets once per month.	90	\$220
<b>Eurhythmics for Music Teachers</b> DIME102	Adults	Su	This course is designed for music educators. Class meets twice per month.	90	\$300
<b>Solfège and Improvisation for Music Teachers</b> DIME101	Adults	Su	This course is designed for music educators. Class meets twice per month.	90	\$300

Scan orange QR codes for detailed course information or visit: [colburn.asapconnected.com](http://colburn.asapconnected.com)

COLBURN SCHOOL

COMMUNITY SCHOOL  
OF PERFORMING ARTS

REGISTER NOW

[colburnschool.edu/register](http://colburnschool.edu/register)  
[cspa@colburnschool.edu](mailto:cspa@colburnschool.edu)



# Academic Policies 2024–25 26

At the Community School of Performing Arts, we strive for open communication between faculty, students, and administration and ask that you familiarize yourself with the information below regarding our school policies. The complete policies can be found on our website at [colburnschool.edu/community-school/student-resources/](http://colburnschool.edu/community-school/student-resources/).

## REGISTRATION POLICIES AND PROCEDURES

The registration procedures at the Colburn School are designed to place students in appropriate courses through interviews, auditions, and other screening methods. These procedures help to minimize enrollment in inappropriate courses, and to minimize the need to drop lessons and classes. Registration for group classes and ensembles must be completed during the enrollment period listed on the Academic Calendar. Late enrollments will be permitted pending the instructor's approval. Students may register for private instruction at any time throughout the year.

A \$30 registration fee will be applied to all new enrollments beginning August 1, 2024, for fall and year-long enrollments or January 13, 2025, for spring enrollments.

All students are required to commit to a full year of study for approximately 32 weeks during the fall and spring semesters. There are only three exceptions to this rule:

1. Students in the Early Childhood and Adult programs are only required to commit to one semester.
2. Adults enrolling in private lessons may commit to a mutually-agreeable schedule with their private instructor that is less than 32 weeks.
3. School-aged students enrolling in private lessons after the start of the academic year may register for the number of weeks remaining in the year.

All other exceptions must be approved by the Dean. Students must submit a written request for an exception to the Dean by emailing the Community School office at [cspa@colburnschool.edu](mailto:cspa@colburnschool.edu).

## TUITION PRO-RATE SCHEDULE

Students beginning group classes after the start of a semester will be charged tuition on a pro-rated basis, as follows:

### Full-Year Classes (Fall & Spring)

WEEKS 1–8	Student pays 100% of tuition
WEEKS 9–16	Student pays 75% of tuition
WEEKS 17–24	Student pays 50% of tuition
WEEKS 25–32	Student pays 25% of tuition

### Single Semester Classes

WEEKS 1–4	Student pays 100% of tuition
WEEKS 5–8	Student pays 75% of tuition
WEEKS 9–12	Student pays 50% of tuition
WEEKS 13–16	Student pays 25% of tuition

Tuition is not pro-rated for Summer Session classes.

## JURY REQUIREMENT

All school-aged students enrolled in private lessons are required to perform a jury during the week of May 13–19, 2025. No lessons or classes will take place during this time. The jury is an important learning experience for our students and it provides them not only with an opportunity to perform, but also to receive written feedback from other CSPA faculty. The jury schedule is coordinated by the program manager with the assistance of the department chairs. The fee for juries is included in the private lesson tuition and is non-refundable. The Colburn School greatly values this as an important learning experience.

## DROP/WITHDRAW PROCEDURE

The parent/student must complete and submit the Add/Drop Form either in-person to the Community School office or via email to [cspa@colburnschool.edu](mailto:cspa@colburnschool.edu). Once receipt is confirmed by the Community School office, the drop request will be reviewed by the Dean. All refunds and credits must be approved by the Dean. There is no guarantee that a full refund and/or credit will be granted.

The student is eligible for a 100% refund of tuition if the form was submitted prior to the first day of the semester\*. Following the start of the semester, students may be eligible for the following:

During the first week of class: refund up to 75%  
During the second week of class: refund up to 50%

During the third week of class: refund up to 25%  
Following the third week of class: there are NO REFUNDS

\*NOTE: The first day of the semester for year-long enrollments corresponds to the beginning of the fall semester. The first day of the semester for single-semester classes (Early Childhood and Adult Classes) corresponds to the start date of the respective semester. Drop requests for year-long enrollments following the third week of the fall semester will only be honored pending the Dean's approval.

## COLBURN SCHOOL

## COMMUNITY SCHOOL OF PERFORMING ARTS

## LEARN MORE

[colburnschool.edu/community-school/student-resources](http://colburnschool.edu/community-school/student-resources)  
[cspa@colburnschool.edu](mailto:cspa@colburnschool.edu)



# Academic Policies 2024–25 27

Informing an instructor of a decision to withdraw, stopping payment, or not attending class does not constitute a withdrawal. Exceptional requests for refunds due to a family or medical emergency may be made in writing to the Dean within 14 days of the missed class and must include appropriate documentation. There is no guarantee that a full refund will be approved due to a family or medical emergency.

## **ABSENCE POLICIES**

Students must notify faculty of anticipated absences as a courtesy to the faculty members; however, this does not exempt the student from payment as contracted. There will be no make-up lessons for student absences. If a teacher is absent from a scheduled lesson, a make-up lesson shall be scheduled at a mutually convenient time. If the student misses a make-up lesson, there will be no second make-up opportunity. In cases of sudden illness on the part of the teacher, the teacher and the School shall make every reasonable attempt to notify students.

## **SUSPENSION**

Delinquency in payment of tuition and fees may result in suspension of a student's enrollment. Suspended students shall not be allowed to attend classes, rehearsals, or lessons; instruction shall be resumed only upon full payment of any balance due and with approval of the program manager. There will be no credit or make-up for any lessons or classes missed because of suspension.

## **PAYMENTS**

Payment must accompany the registration form. Payment of tuition and fees is expected in full at the time of enrollment unless a deferred payment plan is requested. Upon approval of a deferred payment plan, all payments are due on or before the 15th of the month. All deferred payment plan arrangements must be made directly with the Community School office, and all payments will be handled by the Cashier.

Any payments received after the 15th will be automatically assessed a \$35 late fee. Subsequent late fees will be charged every month until payment is received.

Deferred payment plans will remain in effect until tuition is paid in full. Withdrawing from a class does not guarantee cancellation of remaining payments. Cancellation of remaining payments is subject to the Dean's approval.

## **KEY CARD ACCESS/ID BADGES**

To enhance campus security, each family will be given up to three ID badges to access the building and parking facilities at Colburn. All students must fill out a Card Key Request Form, which can be picked up from the Community School office and submit it to the security desk in the Grand or Olive Building. Proof of registration and payment is required at the time of submission. Key cards will be required to enter buildings, access elevators, and use the library. Please pay attention to posted signs and requests made by security guards to show your key card. Lost key cards may be replaced for a fee of \$25. Please visit the Community School office to pay the replacement fee.

## **PARKING**

With a student population of 2,000+ students, parking at the Colburn School is not guaranteed. A limited number of spaces are available to Colburn families on a first come, first served basis. Families can receive up to two parking decals upon completing registration. However, a parking decal does not constitute a guaranteed parking space.

On a busy day when there is a line of cars waiting to enter the garage, students may be dropped off in front of the school on Grand Avenue. There is a loading area in front of the doors across from the Broad Museum. After dropping off your student, please make your way to Lower Grand and patiently wait in line for a parking space to open in the garage. If you do not wish to wait for a spot to open, offsite parking at a discounted rate is available at Lot #3 on the southwest corner of Olive and 2nd Street. We recommend that you have a validation in-hand when parking in Lot #3 so that you can receive the discounted rate without interruption. Validations can be purchased in the Community School office for \$4 each.

## **EMERGENCY ALERT SYSTEM**

The Colburn School notifies its community of emergency situations through text messages using an alert system called InformaCast. In the event of an emergency, such as a fire, active shooter, or earthquake, messages will inform the community of the nature of the emergency, what to do, and when the situation is clear. Parents and students are strongly encouraged to register with InformaCast.

Text "#emergencynotification" to (818) 423-4168 to receive Colburn School emergency alerts from InformaCast. Contact Sandra Gendron, Security Director, at [sgendron@colburnschool.edu](mailto:sgendron@colburnschool.edu) with any questions about InformaCast.

For complete school policies, please visit: [colburnschool.edu/community-school/student-resources/](https://colburnschool.edu/community-school/student-resources/)



# Academic Calendar

## 2024–25

29

### 2024 FALL SEMESTER (16 WEEKS)

Formal Registration Period:

Monday, July 1–Sunday, July, 14  
Monday, July 15, 2024  
Thursday, Aug 1, 2024  
Saturday, August 24, 2024  
Monday, September 2  
Tuesday, Nov 26–Sun, Dec 1  
Friday, December 20  
Sat, Dec 21–Fri, Jan 3

Priority 2024–25 Annual Registration for Continuing Students  
Open 2024–25 Annual Registration for All Students  
Fall 2024 Fees and \$30 Registration Fee Begins  
First Day of Fall Semester Instruction  
Labor Day Holiday—SCHOOL CLOSED  
Thanksgiving Break—NO CLASSES  
Last Day of Fall Semester  
WINTER BREAK—NO CLASSES – SCHOOL CLOSED

### MIDYEAR

Sat, Jan 4–Sun, Jan 12

Semester Break—Make-Up Lessons—School Open

### 2025 SPRING SEMESTER (16 WEEKS)

Formal Registration Period:

Mon, Dec 2–Sun, Dec 15  
Mon, December 16  
Sat, January 11  
Mon, January 13  
Mon, January 20  
Mon, April 14–Sun, April 20  
Tue, April 15  
Thur, May 1  
Mon, May 12  
Tue, May 13–Mon, May 19  
Tue, May 20–Mon, June 2  
Mon, May 26  
Sat, May 31

Continuing Student Spring Registration for Early Childhood and Adult Classes  
Open Spring Registration for All Students  
Early Childhood Orientation for New Students  
First Day of Spring Semester  
Martin Luther King, Jr. Holiday—SCHOOL CLOSED  
SPRING BREAK—NO CLASSES  
Priority Summer Registration for Continuing Students  
Open Summer Registration for All Students  
Last Day of SPRING Semester Instruction  
\*JURY WEEK—NO CLASSES OR PRIVATE LESSONS  
Semester Break—Make-Up Lessons—School Open  
Memorial Day Holiday—NO CLASSES  
Early Childhood Orientation for New Students

### 2025 SUMMER SESSION

Wed, June 4–Fri, August 1

Summer at Colburn is a combination of camps, workshops, weekly group classes, and private instruction that are held in different time periods depending on the course of study.

Fri, July 4

Independence Day Holiday—NO CLASSES—SCHOOL CLOSED

**NOTICE** All dates are subject to change. It is the responsibility of students and parents to note all calendar dates and schedule changes as they are posted. The Colburn School does not follow LAUSD or other school calendars.

Please refer to [colburnschool.edu](https://colburnschool.edu) for calendar dates, schedule changes, registration information and policies. If a holiday is not listed above, it is not observed as an official school holiday.

\*JURY WEEK is not part of your lesson count. There are no group classes or private lessons scheduled this week.

COLBURN SCHOOL

COMMUNITY SCHOOL  
OF PERFORMING ARTS

REGISTER NOW

[colburnschool.edu/register](https://colburnschool.edu/register)  
[cspa@colburnschool.edu](mailto:cspa@colburnschool.edu)



# SUMMER SESSION

Students of all ages can continue their musical studies in June and July during Colburn's Summer Session. From group classes to private lessons and intensives, the Community School has options for students at any level.



## Group Classes

Our Early Childhood Summer Samplers introduce children ages 7 months to 7 years to the joys of music and the performing arts. Drama, Music Theory Intensives, Group Guitar, and Group Piano allow school-aged and adult students to explore their creativity alongside their peers.

## Private Lessons

If you have ever wanted to learn to play an instrument, or if you're an experience musician looking to refine your skills, our faculty use their expertise to help students of all ages and ability levels develop their musicianship, technique, and confidence. Tuition discounts are available for select lesson packages!



LEARN MORE ABOUT SUMMER SESSIONS

<https://colburnschool.edu/community-school/register/>



# JOIN AN ENSEMBLE AT COLBURN!

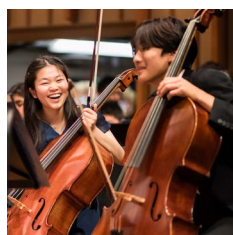
The Colburn Community School of Performing Arts offers an array of ensembles that are designed for young intermediate to advanced level students who want to take their musical abilities to the next level.

Applications for 2025–26 are  
due April 15—Apply Now!



## Advanced Orchestras

Eleanor Núñez  
Director of Orchestras



### Colburn Sinfonietta

Ages 13–18 | Intermediate to advanced level

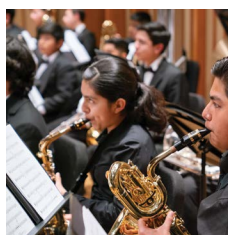
### Colburn Youth Orchestra

Ages 13–18 | Intermediate to advanced level



## Bands

Eleanor Núñez  
Director of Bands



### Concert Band

Grades 6–12 | Intermediate level

### Wind Symphony

Grades 9–12 | Intermediate to advanced level



## Chamber Ensembles

Moni Simeonov  
Chair, Ed and Mari Edelman Chamber Music Institute



### Introduction to Chamber Music

Ages 8–14 for strings and piano, 11–18 for brass and woodwinds | Intermediate level

### Chamber Music Institute

Ages 9–18 for strings and piano, 11–18 for brass and woodwinds | Intermediate to advanced level

### Honors Chamber Program

Ages 13–18 | Advanced level | Scholarships awarded for participation—Highly competitive



## Choirs

Adrian Dunn  
Director of Choral Programs



### Children's Chorus

Ages 6–10

### Youth Chorus

Ages 10–14

### Concert Choir

Ages 14–20 | Prior choral experience strongly encouraged





# Summer with Colburn 2025

## Music Camps, Intensives, and More!

Taking place in June and July, music camps and intensives at the Community School of Performing Arts are an opportunity for students to connect with peers, work one-on-one with experienced faculty, and interact with renowned guest artists.

### Chamber Music Intensive\*

June 17–29 | Ages 13–18

### Colburn-Tonebase Piano Seminar\*

June 17–30 | Ages 13–18

### Dalcroze Summer Intensive for Music Educators\*

June 19–27 | Ages 18+

### Guitar Intensive\*

July 7–18

Classical Track | Ages 10–18

Studio Track | Ages 12–18+

### Los Angeles Brass Institute\*

Intermediate Seminar July 8–19 | Ages 13–18

Advanced Seminar July 8–19 | Ages 15–22

### NEW! Musical Theatre Intensive\*

June 17–28 | Ages 14–18

### Piano Camp Intensive\*

July 7–18 | Ages 9–13

### Saxophone Intensive\*

June 16–27 | Grades 6–12 | Ages 11–18

### Sounding Point Academy

June 2–14 | No age limit

\* Early Bird Pricing Available



# Community School Scholarships

The Community School is proud to recognize the excellence and dedication of its students through Jumpstart and Herbert Zipper Scholarships, and to provide additional scholarship awards in recognition of merit and financial need.

Central to the Colburn School's commitment to providing equitable access to excellence, Jumpstart Scholarships directly address the lack of arts programming within public schools and provide students with instruments and weekly music classes at Colburn at no cost. The Herbert Zipper Scholarships support highly motivated students, who receive instruction in music theory, private lessons, and ensemble participation, among many other academic and performance opportunities.

Special appreciation this year goes to the extraordinary scholarship support of the Max H. Gluck Foundation; Marilyn Ziering; The Ward Family; Adams-Mastrovich Family Foundation; Edison International; Pasadena Showcase House for the Arts; Hennings-Fischer Foundation for the Noumi Fischer Scholarship; Sidney Stern Memorial Trust; and Marisa Silver and Ken Kwapis, in memory of Marjorie Kwapis.

If you would like to learn more about providing scholarship support to the Community School, contact [philanthropy@colburnschool.edu](mailto:philanthropy@colburnschool.edu).

