

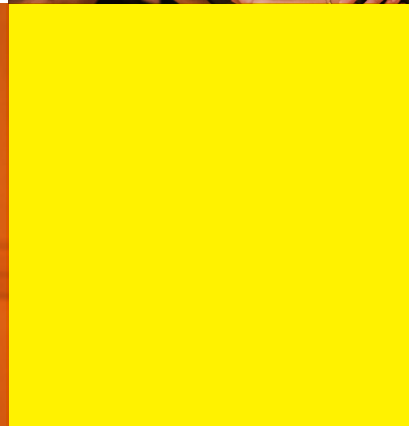
COLBURN SCHOOL


COMMUNITY SCHOOL OF PERFORMING ARTS



Course Catalog

2025–26 Academic Year



COLBURN

SCHOOL

Contents

About Us.....	3
Adaptive Music Program	4
Scholarships	5
Private Music Instruction	6–7
Early Childhood Creative Arts Program	8–9
Suzuki	10–11
Drama & Singing More	12
Choir	13
Group Instruction	14–15
<i>Group Guitar; Group Piano; Beginning Strings; Wind, Brass, Percussion</i>	
Chamber Music.....	16
Small Ensembles.....	17
Bands	18
Orchestras	19
Voice & Musical Theatre	20
Jazz.....	21
Music Theory	22
Dalcroze	23
Composition & Conducting	24
Adult Classes	25
Academic Policies and Calendar.....	26–28





Access to Excellence

The Colburn Community School of Performing Arts (CSPA) serves students of all ages with classes in music, drama, and early childhood arts education, taught by acclaimed faculty committed to providing the highest quality teaching on a modern campus designed solely for excellence in performance and education.

Founded in 1950 as an open-enrollment school, the CSPA covers a broad range of styles, age levels, and degrees of difficulty. Music classes include applied musical instruction, music theory, chamber ensemble, and orchestral opportunities. In addition to their individual studies, Colburn students participate in a variety of community outreach programs and perform in more than 300 concerts and recitals each year, many of which are free and open to the public.

The Colburn Community School of Performing Arts has been accredited by the National Association of Schools of Music (NASM) since 1980 and is also a member of the National Guild for Community Arts Education.

Our Staff

Susan Cook	Dean
Timothy Lewis	Program Manager
Arnulfo Reyes	Marketing and Program Specialist
Dan Gonda	Operations Specialist
Ivette Tello	Program Specialist
Josiah Vietti	Ensemble and Student Services Coordinator
Ron Mitchell	Ensemble Coordinator and Student Services Specialist

Contact Us

Email	cspa@colburnschool.edu
Phone	213-621-4548

Office Hours (Room G-205)

Fall & Spring	Mon–Fri, 10 am–6 pm Sat, 8 am–4 pm Sun, 11 am–4 pm
Summer	Mon–Sat, 8 am–4 pm Sun, Closed

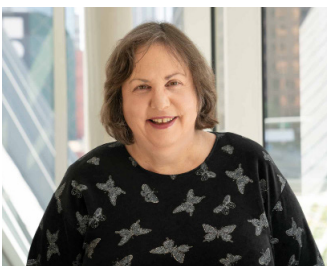


Adaptive Music Program 4

Private Instruction for Individuals with Special Needs



The Community School provides a special program for children and adults with academic or learning challenges. The Adaptive Music Program (AMP) provides individualized music programming and adapted music instruction taught by music specialist Ms. [Francesca Bori](#).



Students with special needs have the opportunity to learn to play a musical instrument within a therapeutic environment designed to develop one's own potential. This process begins with a structured music-based assessment of motor skills, behavioral, social and emotional levels, attention, and communication ability. Monthly meetings with parents and yearly written summaries provide an opportunity to review the progress of the student.

For more information, please contact Ms. Bori at fbori@colburnschool.edu.

COLBURN SCHOOL

**COMMUNITY SCHOOL
OF PERFORMING ARTS**

[LEARN MORE](#)

colburnschool.edu/adaptive-music



SCHOLARSHIPS AT THE COMMUNITY SCHOOL OF PERFORMING ARTS

The Colburn Community School of Performing Arts welcomes students of all skill levels and musical backgrounds. We understand that some students may need financial assistance to pursue their studies. Thanks to the generosity of local and national donors, as well as supporting foundations, we offer a range of scholarships for school-aged students enrolled in private lessons, ensembles, and group classes, helping to make quality music education accessible to all.

Scholarships are offered during the fall and spring semesters; we do not offer scholarships for the summer session. Scholarships are only available for students ages 7 months to 18 years, or grade 12 and under.

Herbert Zipper Scholarships

Full-tuition scholarships designed for highly motivated students engaged in comprehensive music education. Recipients are required to participate in weekly music theory classes, private lessons, and ensembles. Scholarships are renewed annually through high school graduation, provided all requirements are met.

Need-Based Scholarships

Designed for students requiring financial assistance, these scholarships cover 10–90% of tuition for group classes or private lessons on a sliding scale. Recipients must reapply annually.

Merit-Based Scholarships

Merit-based scholarships are awarded annually to pre-college-aged students in recognition of exceptional performance and progress. These awards are available for participation in large ensembles, Fiddles on Fire, and the Honors Chamber program, with recipients selected through auditions and evaluations.



"The Herbert Zipper Scholarship has truly changed my life [...] Without this scholarship, I wouldn't have had the opportunity to continue developing my passion and skills in such a life-changing way."

LAL BESIR,
HERBERT ZIPPER
SCHOLAR RECIPIENT

APPLY FOR 2025–26 SCHOLARSHIPS

The deadline to apply has passed, but we will accept late Need-Based Scholarship applications on a rolling basis.



Check eligibility requirements and apply
online at colburnschool.edu/scholarships.

2025–26 TUITION FEES FOR 32 WEEKS

30 min	\$2,880
45 min	\$4,096
60 min	\$5,216
90 min	\$7,648

PROMOTIONAL DISCOUNTS FOR 2025–26

The school is also providing a promotional discount on **woodwind**, **brass**, and **percussion** private lessons. The rates for 32 lessons are listed below.

30 min	\$2,512
45 min	\$3,360
60 min	\$4,320

SPECIAL MUSIC THEORY DISCOUNT

Students enrolled in private lessons at Colburn receive 50% off of their music theory tuition!*

Music theory is essential for building a strong foundation in any young musician's education, and we strongly encourage all students to enroll. Learn more about Music Theory on page 22.

*Discount is only applicable once per student, and is only valid for year-long enrollments. This discount cannot be applied to pro-rated music theory tuition.

Explore your potential at Colburn— submit your inquiry today!

The Colburn Community School of Performing Arts offers personalized, one-on-one instruction for students of all ages and skill levels on any instrument, including voice. Our expert faculty help students develop their technique, musicianship, and confidence in a supportive environment.

School-aged private lesson students gain exclusive access to performance opportunities, including Friday Night Recitals, Winter and McAllister Honors Recitals, and master classes with renowned guest artists. They also enjoy a 50% tuition discount on music theory group classes, which provide essential tools for understanding and mastering their craft.

How to Get Started

New students may join at any time during the year. Submit an Inquiry Form at colburnschool.edu/inquiry, and a department chair will contact you within seven business days to arrange an informal interview or audition for placement.

Lesson Details

SCHEDULE

Lessons are arranged directly with the instructor and must take place within the registered time period.

COMMITMENT

School-aged students register for the full academic year (32 lessons). Adults may register for any number of lessons as agreed upon by the instructor.

2025–26 ACADEMIC YEAR

August 23–May 11

Make-up weeks: January 2–11 and May 19–June 1

2026 SUMMER SESSION

June 3–July 31, with special discounted packages

Faculty

Bassoon BSPI

Beene, Richard*
Kuhlmann, Evan

Cello VCPI

Bori, Francesca
Cho, Stella
Gasparyan, Vardan
Greensmith, Clive*
Kessler, Carlyn
Koo, Sarah
Lash, Ben
Wright, Elizabeth
Yamagata, Nancy

Clarinet CLPI

Gilad, Yehuda*
Wellwood, William
Yoshimi, Michael

Conducting COND

Núñez, Eleanor

Dalcroze DLPI

Izumi, Mari

Double Bass DBPI

Baird, Ryan
Botsford, Ted

Flute FLPI

Lundgren, Karen
Tanner, Chelsea

Guitar GTPI

Sheu, Connie
Young, Erin
Youngstrom, Kenton

Harp HPPI

Turovsky, JoAnn*

Horn HNPI

Ondarza, Danielle

Jazz Piano JPPI

Kinnon, Liz

Jazz Saxophone JSPI

Secard, Lee

Music Theory MTPI

Sawada, Kathy

Music Composition CPPI

Eremiasova, Michaela
Nelson, Jordan

Oboe OBPI

Sugata, Ted

Percussion PCPI

Kalaf, Jerry
McGrath, Kenneth
Ordaz, Matt

Piano PNPI

Bori, Francesca
Cheli, Dominic
de Jong-Pombo, Teresa
Dokshitsky, Rina
Fadial, Vanessa
Gilmour, John
Glicklich, Carmina
Grodin, Sam
Grubelic Malo, Ivana
Huang, Grace
Hudson, Natalia
Izumi, Mari
Kapouler-Gartner, Inga
Kim, Hyejin
Kim, Miji
Kwon, Heewon
Lavner, Jeffrey
Leone, Rodolfo
Martínez-Antón, Régulo
Rhee, Yung Mee
Wu, Hui
Yui, Micah

Saxophone SXPI

Hallberg, John
Pittel, Harvey*
Secard, Lee

Trombone TBPI

Suminski, Shelly

Trumpet TPPI

Zonshine, Mike

Tuba TUPI

Tornquist, Douglas

Viola VAPI

Cha, Keum Hwa
Coletti, Gina
Granger, Alex
Picken, Andrew
Shimasaki, Rumi
Shimizu, Margaret

Violin VNPI

Cha, Keum Hwa
Cadow, Sherry
Fischer, Sam
Granger, Alex
Gronnier, Henry
Kastner, Gallia
Kennedy, Carrie
Kim, Sofia
Kim, So Jin
Kreston, Aimée
Kwuon, Joan
Lee, Joanna
Lipsett, Robert*
Lavner, ShihLan
Olevsky, Dimitry
Schwabe, Richard
Simeonov, Moni
Shimasaki, Rumi
Shimizu, Margaret
Yun, Chan Ho

Voice VOPI

Dunn, Adrian
Johnson, Craig
Oliver, Jessie
Stevens, Michael

*Master Rate Instructor (special rates apply).

SING, MOVE, AND PLAY

Embark on your child's journey
in the performing arts!

We offer a sequential curriculum
designed to support the cognitive,
creative, and social development of
children ages 7 months to 7 years.



Get to Know the Department Chair, Dr. Nita Baxani

Dr. Nita Baxani has held leadership roles in arts programs and schools in both the United States and Germany. She received a Doctor of Education degree from Teachers College, Columbia University, where her dissertation focused on the musicality of infants within a childcare community. Her work in creating new programs and curriculum design is collaborative in nature and covers a variety of pedagogical approaches that foster an inclusive child-centered environment. As an arts advocate, Dr. Baxani enjoys creating programs and cultivating partnerships with schools and community and cultural organizations.

Benefits for Children and Parents

Classes employ developmentally appropriate materials to encourage growth in key areas such as: social and emotional development, cognition, and motor skills. Caregivers are a child's first teachers, so your involvement in our classes is crucial to your child's progression through the curriculum. By attending classes with your child, you will continue to strengthen the connection with your child while laying a foundation for their continued artistic growth at Colburn. One of our goals is to support students as they work towards independence. As your child progresses through the curriculum, the level of your involvement in class may change.



New students must submit an inquiry for class placement prior to enrolling.

[Submit an inquiry online here!](#)





Course Name / ID	Description	Ages	Fee
Babes in Colburnland ECGA101	Our specially-trained instructors work with parents and infants to cultivate developmental listening skills with activities to help children absorb music concepts. Teachers design sensory experiences to fascinate and captivate children. As classes progress, infants move from being merely receptive to engaging in an active role.	7–17 mo	\$605
Making Music in Colburnland ECMC101	This family-oriented class encourages toddlers to become actively engaged in making music. Through the use of nursery poems and songs, children explore various musical traditions and styles.	18–24 mo	\$605
Musical Play ECMP201	As toddlers gain more motor development skills, they're more likely to want to move, and this class encourages them to explore movement through music and imagination. Teachers also work with the young students to improve listening skills through play, songs, stories, and games.	2–3 yr	\$605
Musical Play (ESP) ECMP202	A medida que los niño/a(s) pequeños adquieren más habilidades de desarrollo motor, es más probable que quieran moverse, y esta clase los alienta a explorar el movimiento a través de la música y la imaginación. Los maestro/a(s) también trabajan con los jóvenes estudiantes para mejorar sus habilidades auditivas a través de juegos, canciones, cuentos y juegos.	2–3 yr	\$605
Creative Storymaking & Movement ECST101	Students are treated to games and stories that will trigger their imagination, individual expression, and language skills. They engage in exercises to develop body awareness, concentration, group cooperation, coordination, and balance. Activities utilize rhythmic verbalization, pantomime, dramatic play, and creative movement.	3–3.5 yr	\$640
Super Singers ECSS101	Super Singers begin working on vocal techniques through games, songs, and stories. Our knowledgeable teachers help students produce good tone quality and improve diction as well as correct vocal placement and singing in the proper register. They also introduce basic elements of music, such as tempo, dynamics, rhythm, phrasing, timbre, and style.	3–5 yr	\$640
Rhythm and Movement ECRM101	Rhythm helps give movement purpose. In this class, preschool-age children learn to direct their energy into basic rhythms and rhythmic patterns while also improving listening and motor skills. They're also shown proper playing techniques for small percussion instruments used in classroom exercises.	3.5–5 yr	\$640
Rhythmic Styles & Techniques ECRS102	Classes are designed to initiate instrument instruction with a concentration on various rhythmic styles and techniques on Orff and percussion instruments. Teachers work with students to improve muscle and hand-eye coordination as well as a growing awareness of rhythmic and melodic patterns. Students even begin rhythmic notation reading. Creativity is promoted through improvisation activities.	4–5.5 yr	\$640
Exploring the Keys ECEK101	The class provides musical experiences in the development of motor and ear-training skills, hand-eye coordination, a sense of keyboard geography, finger dexterity, and concentration. This course offers pre-reading exercises to develop the child's keyboard sense. Students must have access to an acoustic piano or keyboard for daily practice.	4–5 yr	\$585
Sing, Move & Play! ESSM100	This course provides a foundation of music skills structured through critical listening, singing, creative movement, and playing a variety of unpitched and pitched instruments. Students will develop musicianship skills that prepare them to explore a variety of music while building music concepts such as rhythm, melody, dynamics, and form.	5–6 yr	\$640
Singing More ECSM200	Through interactive games, songs, and stories, students develop singing skills, explore vocal techniques, and learn basic elements of music. An extension of Super Singers, this class will work towards building a basic foundation for ensemble singing. This class is yearlong.	5–7 yr	\$1,170





Suzuki Program

Colburn’s Suzuki Program, based on the method founded by Japanese violinist Dr. Shinichi Suzuki, embraces the philosophy that every child is born with musical potential that can be nurtured to a high level. This method emphasizes parent involvement in lessons and daily practice, fostering a deep commitment to learning. Through weekly private lessons and group classes for violin, cello, and guitar, students build strong technical foundations, ensemble skills, and artistry.

The Colburn Suzuki program is open to children as young as four for strings and five for guitar.

FAMILIES INTERESTED IN APPLYING FOR THE 2026–27 ACADEMIC YEAR MUST SUBMIT AN ONLINE INQUIRY BY JANUARY 15, 2026.



Submit an Inquiry
colburnschool.edu/inquiry
cspa@colburnschool.edu



Suzuki Strings

Course Name / ID	Age	Day	Pre-Requisites	Minutes	Fee
Suzuki Group - Cello SZGC101	4–18 yr	We	Submit an inquiry for placement prior to enrolling.	60	\$830
Suzuki Group - Violin SZGN101	4–18 yr	We	Submit an inquiry for placement prior to enrolling.	60	\$830

Scan orange QR codes for detailed course information or visit: colburn.asapconnected.com





Suzuki Guitar

Course Name / ID	Age	Day	Additional Information	Minutes	Fee
Suzuki Group - Guitar SZGG101	4–16 yr	Mo	Instructor approval required. Email Connie Sheu at csheu@colburnschool.edu	45	\$700
Guitar Orchestra SZGT101	10–16 yr	Tu	Instructor approval required. Email Connie Sheu at csheu@colburnschool.edu	75	\$1,285
Intermediate Guitar Quartet SZGQ401	Varies	Mo	Instructor approval required. Email Connie Sheu at csheu@colburnschool.edu	45	\$1,285



Add-On Classes for Suzuki Students

Course Name / ID	Age	Day	Additional Information	Minutes	Fee
Dalcroze for Suzuki DALC201	Varies	We	Submit an inquiry for placement prior to enrolling	35	\$605
Violin Ensemble ENVE100	8–15 yr	We	Instructor approval required. Email Margaret Shimizu at mshimizu@colburnschool.edu	40	\$1,040
String Ensemble ENSE200	10–18 yr	We	Audition required. Email Rebecca Frazier at rfrazier@colburnschool.edu	50	\$1,140
String Orchestra ENSO300	10–18 yr	We	Audition required. Email Rebecca Frazier at rfrazier@colburnschool.edu	50	\$1,350



Drama & Singing More 12



Drama

The Drama program at the Community School focuses on the process of learning so that students can build confidence and are inspired to take creative risks. The acting classes begin with improvisation, body movement, and theater games, and progress to monologue, scene work, script analysis, and character development. The program strongly emphasizes process over product, creating a learning environment in which students are free to explore and work without fear of judgment.



Course Name / ID	Age	Day	Additional Information	Minutes	Fee
Creative Dramatics DRCD101	5–7 yr	Sa	N/A	25	\$1,040
Drama I DRCL101	8–11 yr	Sa	N/A	55	\$1,265
Drama II DRCL201	12–16 yr	Sa	N/A	55	\$1,265



Singing More

Through interactive games, songs, and stories, students will develop essential singing skills, explore vocal techniques, and learn the basic elements of music. As an extension of Super Singers, this class focuses on building a strong foundation for ensemble singing, making it an excellent way for young singers to prepare for the Children's Chorus, which they can join at age 7.



Course Name / ID	Age	Day	Additional Information	Minutes	Fee
Singing More ECSM200	5–7 yr	Sa	Instructor approval required. Email Nita Baxani at nbaxani@colburnschool.edu	45	\$1,170

Scan orange QR codes for detailed course information or visit: colburn.asapconnected.com

COLBURN SCHOOL

COMMUNITY SCHOOL
OF PERFORMING ARTS

REGISTER NOW

colburnschool.edu/register
cspa@colburnschool.edu





Meet the Director of Choral Programs, Adrian Dunn

Adrian Dunn is an accomplished Emmy Award winner, singer, composer, and conductor. Mr. Dunn holds a Bachelor of Music and Master of Music degree in Voice from the Music Conservatory at Roosevelt University with additional musical studies in opera at the Sibelius Academy of Music in Finland.



Choral Program

Course Name / ID	Age	Day	Additional Information	Minutes	Fee
Singing More ECSCM200	5–7 yr	Sa	Instructor approval required. Email Nita Baxani at nbaxani@colburnschool.edu	45	\$1,170
Children's Chorus VEPT100	7–10 yr	Sa	Audition required. Email Ron Mitchell at rmitchell@colburnschool.edu	50	\$1,265
Youth Chorus VEYP200	10–14 yr	Sa	Audition required. Email Ron Mitchell at rmitchell@colburnschool.edu	90	\$1,450
Colburn Concert Choir VECC400	14–20 yr	Sa	Audition required. Email Ron Mitchell at rmitchell@colburnschool.edu	180	\$2,700
Colburn Concert Choir for Private Voice Students VECC401	14–20 yr	Sa	Discounted tuition rate for students enrolled in private voice lessons at Colburn. Audition required.	180	\$520





Group Guitar

The Community School also offers group classes for ages five through adult. These classes offer students with a range of experience levels a safe and supportive environment to learn guitar technique and musicianship.



Course Name / ID	Age	Day	Pre-Requisites	Minutes	Fee
Group Guitar: Beginning I GTGC101	6–14 yr	Sa	N/A	55	\$1,285
Group Guitar: Beginning II GTGC102	Varies	Sa	N/A	55	\$1,285
Group Guitar: Intermediate GTGC201	Varies	Sa	N/A	55	\$1,285
Group Guitar Advanced GTGC301	Varies	Sa	N/A	55	\$1,285



Group Piano

Group piano classes are ideal for the absolute beginner with no prior experience. Students must own an electric keyboard or piano at home. Registration is open to both continuing and new students. It is recommended that student only take group piano for one to two years of study, after which that the student should inquire to be placed with a private instructor.

Course Name / ID	Age	Day	Additional Information	Minutes	Fee
Group Piano: Introduction to the Piano PNGL100	5–6 yr	Sa	N/A	45	\$1,285
Group Piano: Beginning I PNGL101	6–10 yr	Sa	N/A	45	\$1,285
Group Piano: Beginning II PNGL102	6–10 yr	Sa	N/A	45	\$1,285
Group Piano: Intermediate I PNGL201	7–12 yr	Sa	N/A	45	\$1,285
Group Piano: Intermediate II PNGL301	7–12 yr	Sa	N/A	45	\$1,285
Group Piano: Intermediate III PNGL401	8–14 yr	Mo	N/A	45	\$1,285
Group Piano: High School Beginners PNHS101	13–18 yr	Mo	N/A	45	\$1,285





Beginning Strings

Students who are new to learning string instruments can take one of our group classes for young beginners.

Course Name / ID	Age	Day	Additional Information	Minutes	Fee
Group Viola: Beginner VAIN100	7–10 yr	Sa	N/A	50	\$1,285
Group Viola: Intermediate VAIN200	7–10 yr	Sa	Email Alex Granger at agranger@colburnschool.edu prior to enrolling.	50	\$1,285



Wind, Brass, and Percussion

The Woodwinds, Brass, and Percussion Department offers flute, oboe, clarinet, bassoon, saxophone, horn, trumpet, trombone, tuba, and percussion lessons. Whether you are already proficient in your instrument, or a beginner, you can find excellent training at the Colburn School individualized to your needs.



Course Name / ID	Age	Day	Additional Information	Minutes	Fee
Group Low Brass Beginners JSLB23	9–11 yr	Tu	N/A	60	\$1,285
Group Percussion JSGP2324	9–11 yr	Th	N/A	45	\$965

Scan orange QR codes for detailed course information or visit: colburn.asapconnected.com



The Ed and Mari Edelman Chamber Music Institute offers one of the most comprehensive and intense pre-college level chamber music learning experiences of any music school in North America, with weekly coachings from Colburn's renowned faculty and numerous performance opportunities. Ensembles have won top prizes in competitions like Fischhoff and Coltman and performed on Public Radio International's *From the Top* and with the Chamber Music Society at Lincoln Center.



Intro to Chamber Music Program

Course Name / ID	Age	Day	Additional Information	Minutes	Fee
Introduction to Chamber Ensemble CHMI100	8–12 yr	Varies	Audition required. Email Martin Glicklich at mglicklich@colburnschool.edu	24 Sessions (45m coaching + 15m rehearsal)	\$1,190



Fiddles on Fire

[LEARN MORE](#)

Comprised on young, advanced violinists, the Colburn Fiddles on Fire! will rehearse and perform a wide range of exciting repertoire, both traditional and non-traditional. Students will have a fun and challenging musical experience, develop ensemble skills, hone advanced techniques, and give powerful musical performances.



Chamber Music Program

Course Name / ID	Age	Day	Additional Information	Minutes	Fee
Chamber Music Ensemble CHMI101	13–18 yr	Varies	Audition required. Email Moni Simeonov at ssimeonov@colburnschool.edu	24 Sessions (60m coaching + 60m rehearsal)	\$1,340



Honors Program

[LEARN MORE](#)

The Honors program is for serious and dedicated young musicians for whom music is the top priority. Time commitment is for a minimum of three hours of rehearsal and coaching weekly. In addition, there is a required Honors Chamber Music Seminar, held on Saturday afternoons. Honors groups have regular performing opportunities on the Friday Night, School and Honors Recitals and also in the greater community. All groups are encouraged to enter competitions and are expected to make the necessary preparations. Weekends must be kept open and flexible for frequent performances, master classes and competitions.





Small Ensemble

The Community School of Performing Arts offers a variety of ensembles that give students of all skill levels the opportunity to collaborate with their peers in smaller arrangements.



Course Name / ID	Age	Day	Additional Information	Minutes	Fee
Double Bass Ensemble DBEN101	13–18 yr	Su	Instructor approval required. Email Ryan Baird at rbaird@colburnschool.edu	90	\$1,150
Guitar Ensemble GTEN101	15+ yr	Tu	Instructor approval required. Email Kenton Youngstrom at kyoungstrom@colburnschool.edu	60	\$1,285
Violin Ensemble ENVE100	8–15 yr	We	Audition required. Email Margaret Shimizu at mshimizu@colburnschool.edu	40	\$1,040



Honors Piano Seminar

November 15 | February 7 | March 21 | April 18 | May 9

The Honors Piano Seminar is a unique combination of lectures and master classes designed to help students develop an individual style and personality in performances. The seminar will feature presentations and master classes with world renowned pedagogues. Participating students must be age 13 and up. Contact Teresa de Jong-Pombo at tdejongpombo@colburnschool.edu for more information.





Meet Eleanor
Núñez, Rafael
& Luisa DMH
Foundation Director
of Bands, Colburn
Youth Sinfonietta,
and Colburn Youth
Orchestra Director

Eleanor Núñez is a Spanish-American conductor, pianist, and educator currently based in Southern California. She had her international debut in August 2022 with the Orquesta Sinfónica de la Ciudad de Asunción in Asunción, Paraguay, where she conducted Piano Concerto No. 2 in F Minor by Frédéric Chopin with soloist Chiara D’Odorico as well as the debut of Symphony No. 1 by the prolific composer Daniel Luzko.

Ms. Nunez programs unique concerts that bridge the gap between the audience and musicians on stage. Her belief that music should be accessible to all shines through her creative repertoire programming, enthusiastic rehearsals, and inviting concert environment. Musically, Ms. Nunez loves exploring “the classics” and pairing them with new, modern works. Her conducting experience spans orchestral, wind ensemble, and choral repertoires since she enjoys working with musical groups of all disciplines and genres.



Bands

Course Name / ID	Age	Day	Additional Information	Minutes	Fee
Colburn Youth Wind Ensemble ENCB100	11–18 yr	Su	Audition required. Email Arnulfo Reyes at areyes@colburnschool.edu	150	\$1,190
Colburn Youth Winds ENWE200	13–18 yr	Su	Audition required. Email Arnulfo Reyes at areyes@colburnschool.edu	120	\$1,190

Scan orange QR codes for detailed course information or visit: colburn.asapconnected.com



The Community School offers a comprehensive pre-college orchestral program, comprised of four ensembles ranging from intermediate to advanced level. Middle school-aged students can join the String Ensemble and String Orchestra, both directed by Rebecca Frazier. Advanced middle school and high school-aged students of all symphonic instruments can join the Colburn Youth Sinfonietta and Colburn Youth Orchestra, directed by Eleanor Núñez. Members of each ensemble are selected through competitive auditions each year, and they perform several concerts throughout the academic year both on and off campus.



String Ensemble and String Orchestra

Course Name / ID	Age	Day	Additional Information	Minutes	Fee
String Ensemble ENSE200	10–18 yr	We	Audition required. Email Rebecca Frazier at rfrazier@colburnschool.edu	50	\$1,140
String Orchestra ENSO300	11–18 yr	We	Audition required. Email Rebecca Frazier at rfrazier@colburnschool.edu	90	\$1,350



Advanced Orchestras

Course Name / ID	Age	Day	Additional Information	Minutes	Fee
Colburn Youth Sinfonietta ENCS400	13–18 yr	Sa	Audition required. Email Josiah Vietti at jvietti@colburnschool.edu	165	\$1,795
Colburn Youth Orchestra ENYO300	13–18 yr	Su	Audition required. Email Josiah Vietti at jvietti@colburnschool.edu	165	\$1,795





Voice

At the Colburn School, we teach young vocalists to master their instrument through private voice lessons, vocal classes, and choirs. Our experienced faculty helps students realize physical awareness, performance, and audition etiquette while advancing and improving vocal techniques.



Course Name / ID	Age	Day	Additional Information	Minutes	Fee
Acting the Song SING201	14–18 yr	Sa	Instructor approval required. Email Mike Stevens at mstevens@colburnschool.edu	90	\$1,275



Musical Theatre

The Community School's Musical Theatre program is designed for students ages 14–18 who have a passion for singing, dancing, and acting. This is a program for the triple threat artist to deepen their skill level in voice, dance, and acting, and to provide the skills needed to seamlessly shift back and forth between the three. Our High School Musical Theatre program meets on Sundays from 1–4:30 pm and helps to prepare serious Musical Theatre artists to be competitive in an ever-growing field and prepares them for college auditions.

Our weekly workshop includes a full dance class that rotates jazz, modern, and ballet dance throughout the year. This is followed by a two-hour session that concentrates on group song repertoire, acting, and choreography. Musical Theatre students are instructed on how to connect detailed acting skills to the song and dance. The workshop presents two performances per year.

Course Name / ID	Age	Day	Additional Information	Minutes	Fee
Acting the Song SING201	14–18 yr	Sa	Can be taken á la carte	90	\$1,275
High School Musical Theatre Dance DIMIT105	13–18 yr	Su	Can be taken á la carte	90	\$1,130
High School Musical Theatre Workshop MTWS200	14–18 yr	Su	Audition required for full program. Email Denise Scheerer at dscheerer@colburnschool.edu	210	\$3,910





Jazz Workshops

The Community School's jazz program, known as the Colburn Jazz Workshop, is dedicated to encouraging students to explore the art of improvisation and ultimately even develop into composers, as well. Students can develop their skills through jazz music lessons, playing in an ensemble, or enrolling in a theory class.



Course Name / ID	Age	Day	Additional Information	Minutes	Fee
Monday Night Band JZMN400	14–18 yr	Mo	Instructor approval required. Email Lee Secard at lsecard@colburnschool.edu	115	\$1,275
Thursday Night Band JZTN400	14–18 yr	Th	Instructor approval required. Email Lee Secard at lsecard@colburnschool.edu	55	\$1,275
Saturday 11 AM Band JZSA102	11–18 yr	Sa	Instructor approval required. Email Lee Secard at lsecard@colburnschool.edu	115	\$1,275
Saturday 2 PM Band JZST200	11–18 yr	Sa	Instructor approval required. Email Lee Secard at lsecard@colburnschool.edu	115	\$1,275
Sunday 11 AM Band JZSN100	11–18 yr	Su	Instructor approval required. Email Lee Secard at lsecard@colburnschool.edu	115	\$1,275
Sunday 2 PM Band JZSN300	11–18 yr	Su	Instructor approval required. Email Lee Secard at lsecard@colburnschool.edu	115	\$1,275
Colburn Jazz Workshop Big Band JZBB400	14–18 yr	Tu	Instructor approval required. Email Lee Secard at lsecard@colburnschool.edu	115	\$1,275



Adult Jazz Workshops

Course Name / ID	Age	Day	Additional Information	Minutes	Fee
Adult Jazz Workshop JZAC100	Adults	Su	Instructor approval required. Email Liz Kinnon at ekinnon@colburnschool.edu	135	\$560





Music Theory

Music Theory at the Community School of Performing Arts is a singing-based curriculum designed to enhance and support instrumental and vocal study through active engagement and kinesthetic exploration. From pre-reading exposure classes to 20th-century atonality, music theory classes deepen understanding of the musical process and strengthen artistic expression and performance.

Music Theory and Dalcroze classes are designed to be taken simultaneously or one at a time to accommodate each individual's pace and progress. In the same way, upper-level music theory classes are compatible with simultaneous compositional study as well as advanced Dalcroze study.



Course Name / ID	Age	Day	Additional Information	Minutes	Fee
Introduction to Music Theory MTIN101	Varies	Sa	Submit an inquiry for placement prior to enrolling.	55	\$1,625
Music Theory: Older Beginners (12+) MTOB101	12+ yr	Varies	Submit an inquiry for placement prior to enrolling.	55	\$1,625
Music Theory: Elementary I MTEL201	Varies	Sa	Submit an inquiry for placement prior to enrolling.	55	\$1,625
Music Theory: Elementary II MTEL205	Varies	Varies	Submit an inquiry for placement prior to enrolling.	55	\$1,625
Music Theory: Intermediate I MTIM301	Varies	Varies	Submit an inquiry for placement prior to enrolling.	55	\$1,625
Music Theory: Intermediate II / AP Theory MTIM303	Varies	Varies	Submit an inquiry for placement prior to enrolling.	55	\$1,625
Music Theory: Advanced I MTAV501	Varies	Varies	Submit an inquiry for placement prior to enrolling.	55	\$1,625
Music Theory: Advanced II MTAV502	Varies	Th	Submit an inquiry for placement prior to enrolling.	55	\$2,625
Music Theory: Advanced III MTAV504	Varies	Th	Submit an inquiry for placement prior to enrolling.	55	\$2,625
Music Theory: Advanced IV MTAV506	Varies	Th	Submit an inquiry for placement prior to enrolling.	55	\$2,625





Dalcroze

The Dalcroze philosophy relies on solfege, eurhythmics, and improvisation, which lay the foundation for students serious about instrumental and vocal study. Class activities include vocal awareness, ear training, and sight-singing as well as rhythmic movement. Improvisational works unlock students' innate musicality and develop musical security while a kinetic approach builds up "muscle memory," a trait key to the spontaneous musician. Students' own discovery in music brings joyful and powerful musicianship.

Course Name / ID	Age	Day	Additional Information	Minutes	Fee
Dalcroze I DCIN100	Varies	Sa	Submit an inquiry for class placement prior to enrolling.	50	\$1,235
Dalcroze II DALC101	Varies	Sa	Submit an inquiry for class placement prior to enrolling.	50	\$1,235
Dalcroze III DALC201	Varies	Sa	Submit an inquiry for class placement prior to enrolling.	50	\$1,235
Dalcroze IV DALC301	Varies	Sa	Submit an inquiry for class placement prior to enrolling.	55	\$1,625
Dalcroze for Suzuki DALC201.01	Varies	We	Submit an inquiry for class placement prior to enrolling.	35	\$605
Solfege and Improvisation for Music Teachers DIME100	Adults	Su	Submit an inquiry for class placement prior to enrolling.	90	\$300
Dalcroze Eurhythmics for Music Teachers DIME102	Adults	Su	Submit an inquiry for class placement prior to enrolling.	90	\$300
Dalcroze Pedagogy for Music Teachers DALCMT	Adults	Su	This course is designed for music educators. Class meets twice per month.	90	\$300

Scan orange QR codes for detailed course information or visit: colburn.asapconnected.com



Composition & Conducting — 24



Composition

Course Name / ID	Age	Day	Additional Information	Minutes	Fee
Introduction to Composition CPIN101	Varies	We	Instructor approval required prior to enrolling. Email meremiasova@colburnschool.edu .	90	\$3,940
Introduction to Songwriting MTSW200	Varies	Tu	Instructor approval required prior to enrolling. Email meremiasova@colburnschool.edu .	90	\$3,940
Advanced Composition Lab CPIN300	Varies	Tu	Instructor approval required prior to enrolling. Email meremiasova@colburnschool.edu .	90	\$3,940



Conducting

The Rafael & Luisa DMH Foundation Director of Bands, Eleanor Núñez, takes students on a journey through the elements of conducting technique in order to begin to appreciate the relationship between gesture and sound.

To enroll in conducting lessons or classes, students must currently be an instrumentalist or vocalist at an intermediate to advanced level. Classes and lessons are ideal for students who have been enrolled in chamber music, orchestra, or vocal ensemble programs.



Course Name / ID	Age	Day	Additional Information	Minutes	Fee
Introduction to Instrumental Conducting ORCH101	15–25 yr	Sa	Students must currently be an instrumentalist or vocalist at an intermediate or advanced level.	55	\$1,210
Instrumental Conducting for Adults ORCH102	18+ yr	Sa	Students must currently be an instrumentalist or vocalist at an intermediate or advanced level.	55	\$1,210





Adult Ensembles and Group Classes

At the Colburn Community School of Performing Arts, we offer a wide range of learning and performance opportunities for students ages 18 and up. Whether you're looking to join an adult ensemble, take private lessons, or learn about music fundamentals so that you can support your child's music education, our program is the place for you!



Course Name / ID	Age	Day	Additional Information	Minutes	Fee
Adult Flute Choir FLCH200	Adults	Mo	Instructor approval required. Email Karen Lundgren at klundgren@colburnschool.edu	60	\$315
Adult Jazz Workshop JZAC100	Adults	Su	Instructor approval required. Email Liz Kinnon at ekinnon@colburnschool.edu	135	\$560
Group Guitar: Adult Beginner GTAG101	Adults	Tu	N/A	55	\$570
Group Guitar: Adult Intermediate GTAG201	Adults	Tu	N/A	55	\$570
Group Piano: Adult Beginner PNAG101	Adults	Tu	N/A	55	\$570
Dalcroze Pedagogy for Music Teachers DALCMT	Adults	Su	This course is designed for music educators. Class meets twice per month.	90	\$300
Dalcroze Eurhythmics for Music Teachers DIME102	Adults	Su	This course is designed for music educators. Class meets twice per month.	90	\$300
Solfège and Improvisation for Music Teachers DIME101	Adults	Su	This course is designed for music educators. Class meets twice per month.	90	\$300

Scan orange QR codes for detailed course information or visit: colburn.asapconnected.com

COLBURN SCHOOL

**COMMUNITY SCHOOL
OF PERFORMING ARTS**

REGISTER NOW

colburnschool.edu/register
cspa@colburnschool.edu



Academic Policies 2025–26 26

Complete Community School of Performing Arts policies can be found on our website at www.colburnschool.edu/community-school/student-resources/

ENROLLMENT/REGISTRATION POLICIES AND PROCEDURES

GROUP CLASSES AND ENSEMBLES

Registration for group classes and ensembles must be completed during the Open Enrollment Period listed on the Academic Calendar. Late enrollments will be permitted pending the instructor's approval.

PRIVATE LESSONS

If availability permits, students may register for private instruction at any time throughout the year.

ENROLLMENT COMMITMENT

When enrolling in either a group class, ensemble, or lesson, students are committing to 32 weeks of lessons or classes at a set day and time as established by the class schedule, or by their private lesson instructor or chamber coach. By signing up for lessons, ensembles, or classes, students are committing to attend the registered length of lesson time or class that has been reserved for them on a weekly basis for the duration of the academic year (32 weeks unless otherwise specified).

There are three exceptions to the Enrollment Commitment:

1. Most Early Childhood and Adult courses are one semester in length. Students must re-enroll each semester.
2. Adults enrolling in private lessons may commit to a mutually-agreeable schedule with their private instructor that is less than 32 weeks.
3. School-aged students enrolling in private lessons after the start of the academic year will be registered for the number of weeks remaining in the year.

All other exceptions must be approved by the School. Students must submit a written request for an exception by emailing the Community School office at cspa@colburnschool.edu.

A \$30 registration fee will be applied to all new enrollments beginning August 1, 2025 for fall and year-long enrollments or January 6, 2026 for spring enrollments. There is no registration fee for Summer Session.

DROP PROCEDURE

Students may drop from a course or lessons only during the Open Enrollment Period: **July 1–September 12*** (*Open Enrollment for Monday classes ends on September 15).

The parent/student must complete the online Drop Request Form to drop out of a class, ensemble, or private lesson. The form should be completed in a timely manner once the parent/student decides to withdraw. Students will only be eligible for a credit and/or refund if the request is submitted during the Open Enrollment Period.

Under no circumstances will tuition be retroactively refunded or credited.

The student is eligible for a 100% refund of tuition if the form was submitted prior to the first scheduled class, rehearsal, and/or lesson. The start date for classes and ensembles is listed on the registration website, and the start date for private lessons must be established by the student and instructor prior to registering.

Drop requests following the third week of the class, rehearsal, and/or lesson will only be honored pending the School's approval.

Students who enroll in private lessons outside of the Open Enrollment Period are not eligible for refunds or credits in the event of a drop.

Informing an instructor of a decision to withdraw, stopping payment, or not attending class does not constitute a withdrawal.

Exceptional requests for refunds due to a family or medical emergency may be made in writing to the School within 14 days of the missed class and must include appropriate documentation. Requests must be sent to the Community School office via email at cspa@colburnschool.edu. There is no guarantee that a credit or refund will be approved due to a family or medical emergency.

COLBURN SCHOOL

COMMUNITY SCHOOL OF PERFORMING ARTS

LEARN MORE

colburnschool.edu/community-school/student-resources
cspa@colburnschool.edu



PAYMENTS

Payment must accompany registration, whether online or by registration form. Payment of tuition and fees is expected in full at the time of enrollment unless a deferred payment plan is requested.

Upon approval of a deferred payment plan, an initial deposit will be collected, and all remaining payments are due on or before the 15th of each month. All deferred payment plan arrangements must be made directly with the Community School office, and all payments will be handled by the Cashier.

Any payments received after the 15th will be automatically assessed a \$35 late fee. Subsequent late fees will be charged every month until payment is received.

Deferred payment plans will remain in effect until tuition is paid in full. Dropping a class, ensemble, or private lesson does not guarantee cancellation of remaining payments.

TUITION PRO-RATE SCHEDULE

Students beginning group classes after the start of a semester will be charged tuition on a pro-rated basis, as follows:

Full-Year Classes (Fall & Spring)

WEEKS 1–8	Student pays 100% of tuition
WEEKS 9–16	Student pays 75% of tuition
WEEKS 17–24	Student pays 50% of tuition
WEEKS 25–32	Student pays 25% of tuition

Single Semester Classes

WEEKS 1–4	Student pays 100% of tuition
WEEKS 5–8	Student pays 75% of tuition
WEEKS 9–12	Student pays 50% of tuition
WEEKS 13–16	Student pays 25% of tuition

Tuition is not pro-rated for Summer Session classes.

KEY CARD ACCESS/ID BADGES

To enhance campus security, each family will be given up to three ID badges to access the building and parking facilities at Colburn. All students must fill out a Card Key Request Form, which can be picked up from the Community School office and submit it to the security desk in the Grand or Olive Building. Proof of registration and payment is required at the time of submission. Key cards will be required to enter buildings, access elevators, and use the library. Please pay attention to posted signs and requests made by security guards to show your key card. Lost key cards may be replaced for a fee of \$25. Please visit the Community School office to pay the replacement fee.

PARKING

With a student population of 2,000+ students, parking at the Colburn School is not guaranteed. A limited number of spaces are available to Colburn families on a first come, first served basis. Families can receive up to two parking decals upon completing registration. However, a parking decal does not constitute a guaranteed parking space.

On a busy day when there is a line of cars waiting to enter the garage, students may be dropped off in front of the school on Grand Avenue. There is a loading area in front of the doors across from the Broad Museum. After dropping off your student, please make your way to Lower Grand and patiently wait in line for a parking space to open in the garage. If you do not wish to wait for a spot to open, offsite parking at a discounted rate is available at Lot #3 on the southwest corner of Olive and 2nd Street. We recommend that you have a validation in-hand when parking in Lot #3 so that you can receive the discounted rate without interruption. Validations can be purchased in the Community School office for \$4 each.

EMERGENCY ALERT SYSTEM

The Colburn School notifies its community of emergency situations through text messages using an alert system called InformaCast. In the event of an emergency, such as a fire, active shooter, or earthquake, messages will inform the community of the nature of the emergency, what to do, and when the situation is clear. Parents and students are strongly encouraged to register with InformaCast.

Text “#emergencynotification” to (818) 423-4168 to receive Colburn School emergency alerts from InformaCast. Contact Sandra Gendron, Security Director, at sgendron@colburnschool.edu with any questions about InformaCast.

For complete school policies, please visit:



Academic Calendar

2025–26

29

2025 FALL SEMESTER (16 WEEKS)

Formal Registration Period:

Tuesday July 1–Monday, July, 14
Tuesday, July 15, 2025
Friday, Aug 1, 2025
Saturday, August 23, 2025
Monday, September 1
Tuesday, Nov 25–Sun, Nov 30
Friday, December 19
Sat, Dec 20–Fri, Jan 1

Priority 2025–26 Annual Registration for Continuing Students
Open 2025–26 Annual Registration for All Students
Fall 2025 Fees and \$30 Registration Fee Begins
First Day of Fall Semester Instruction
Labor Day Holiday—SCHOOL CLOSED
Thanksgiving Break—NO CLASSES
Last Day of Fall Semester
WINTER BREAK—NO CLASSES – SCHOOL CLOSED

MIDYEAR

Fri, Jan 2–Sun, Jan 11

Semester Break—Make-Up Lessons—School Open

2026 SPRING SEMESTER (16 WEEKS)

Formal Registration Period:

Mon, Dec 1–Sun, Dec 14
Mon, December 15
Sat, January 10
Mon, January 12
Mon, January 19
Mon, March 30–Sun, April 5
Wed, April 15
Fri, May 1
Mon, May 11
Tue, May 12–Mon, May 18
Tue, May 19–Mon, June 1
Mon, May 25
Sat, May 30

Continuing Student Spring Registration for Early Childhood and Adult Classes
Open Spring Registration for All Students
Early Childhood Orientation for New Students
First Day of Spring Semester
Martin Luther King, Jr. Holiday—SCHOOL CLOSED
SPRING BREAK—NO CLASSES
Priority Summer Registration for Continuing Students
Open Summer Registration for All Students
Last Day of SPRING Semester Instruction
*JURY WEEK—NO CLASSES OR PRIVATE LESSONS
Semester Break—Make-Up Lessons—School Open
Memorial Day Holiday—NO CLASSES
Early Childhood Orientation for New Students

2026 SUMMER SESSION

Wed, June 3–Fri, July 31

Summer at Colburn is a combination of camps, workshops, weekly group classes, and private instruction that are held in different time periods depending on the course of study.

Fri, July 4

Independence Day Holiday—NO CLASSES—SCHOOL CLOSED

NOTICE All dates are subject to change. It is the responsibility of students and parents to note all calendar dates and schedule changes as they are posted. The Colburn School does not follow LAUSD or other school calendars.

Please refer to colburnschool.edu for calendar dates, schedule changes, registration information and policies. If a holiday is not listed above, it is not observed as an official school holiday.

*JURY WEEK is not part of your lesson count. There are no group classes or private lessons scheduled this week.

COLBURN SCHOOL

COMMUNITY SCHOOL
OF PERFORMING ARTS

REGISTER NOW

colburnschool.edu/register
cspa@colburnschool.edu



JOIN AN **ENSEMBLE** AT COLBURN!

The Colburn Community School of Performing Arts offers an array of ensembles that are designed for young intermediate to advanced level students who want to take their musical abilities to the next level.

Applications for 2025–26 are still open—Apply Now!



Advanced Orchestras

Eleanor Núñez
Director of Orchestras



Colburn Youth Sinfonietta

Ages 13–18 | Intermediate to advanced level

Colburn Youth Orchestra

Ages 13–18 | Intermediate to advanced level



Bands

Eleanor Núñez
Rafael & Luisa DMH Foundation Director of Bands



Colburn Youth Wind Ensemble

Grades 6–12 | Intermediate to advanced level

Colburn Youth Winds

Grades 9–12 | Advanced level



Chamber Ensembles

Moni Simeonov
Chair, Ed and Mari Edelman Chamber Music Institute



Introduction to Chamber Music

Ages 8–14 for strings and piano, 11–18 for brass and woodwinds | Intermediate level

Chamber Music Institute

Ages 9–18 for strings and piano, 11–18 for brass and woodwinds | Intermediate to advanced level

Honors Chamber Program

Ages 13–18 | Advanced level | Scholarships awarded for participation—Highly competitive



Choirs

Adrian Dunn
Director of Choral Programs



Children's Chorus

Ages 6–10

Youth Chorus

Ages 10–14

Concert Choir

Ages 14–20 | Prior choral experience strongly encouraged



Early Childhood

Creative Arts Program



SING, MOVE, AND PLAY

Embark on your child's journey in the performing arts! We offer a sequential curriculum designed to support the cognitive, creative, and social development of children ages 7 months to 7 years.

PROGRAM OVERVIEW

Dr. Nita Baxani, Department Chair

Dr. Baxani has held leadership roles in arts programs and schools in both the United States and Germany. She received a Doctor of Education degree from Teachers College, Columbia University, where her dissertation focused on the musicality of infants within a childcare community. Her work in creating new programs and curriculum design is collaborative in nature and covers a variety of pedagogical approaches that foster an inclusive child centered environment. As an arts advocate, Dr. Baxani enjoys creating programs and cultivating partnerships with schools and community and cultural organizations.



Orientation for New Families

Meet Dr. Nita Baxani, learn about the Early Childhood Creative Arts Program, and receive your child's class placement.



JULY 26, 2025 AT 1:30PM

GRAND 240

[RSVP HERE](#)

Scholarships Available for 2025–26

Financial aid—including full tuition scholarships—is available for the 2025–26 academic year. For more information, please contact the Community School office.

colburnschool.edu/earlychildhood
cspa@colburnschool.edu
213-621-4548

[LEARN MORE](#)



COMMUNITY SCHOOL OF PERFORMING ARTS



Private Music Lessons

FOR ALL AGES!

Learn how to play an instrument, refine your musicianship, and grow as an artist with one-on-one music lessons at the Colburn Community School of Performing Arts.

- o Any instrument, including voice
- o World-class instruction from renowned faculty
- o All experience levels welcome
- o Available year-round

LEARN MORE

colburnschool.edu/private-instruction



Community School Scholarships

The Community School is proud to recognize the excellence and dedication of its students through Jumpstart and Herbert Zipper Scholarships, and to provide additional scholarship awards in recognition of merit and financial need.

Central to the Colburn School's commitment to providing equitable access to excellence, Jumpstart Scholarships directly address the lack of arts programming within public schools and provide students with instruments and weekly music classes at Colburn at no cost. The Herbert Zipper Scholarships support highly motivated students, who receive instruction in music theory, private lessons, and ensemble participation, among many other academic and performance opportunities.

Special appreciation this year goes to the extraordinary scholarship support of the Max H. Gluck Foundation; Marilyn Ziering; The Ward Family; Adams-Mastrovich Family Foundation; Edison International; Pasadena Showcase House for the Arts; Hennings-Fischer Foundation for the Noumi Fischer Scholarship; Sidney Stern Memorial Trust; and Marisa Silver and Ken Kwapis, in memory of Marjorie Kwapis.

If you would like to learn more about providing scholarship support to the Community School, contact philanthropy@colburnschool.edu.

